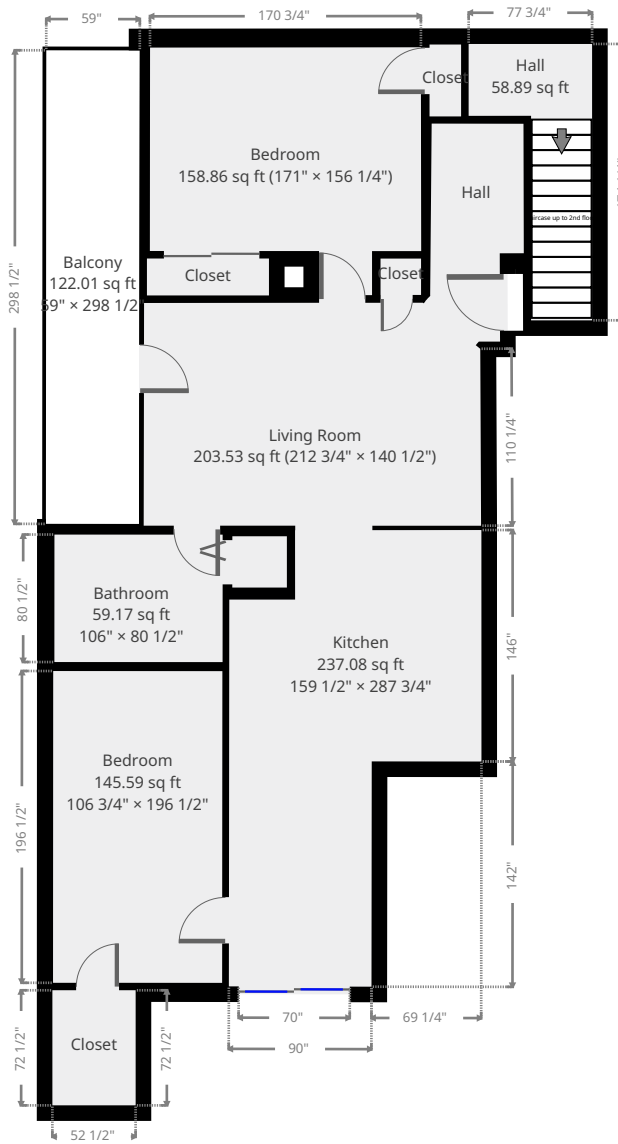


Gresley #53

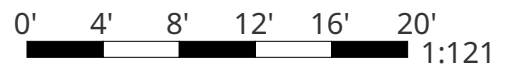
Statistics

Area: 1756 sq ft
2 Floors
3 Bedrooms
1 Bathroom

Ground Floor



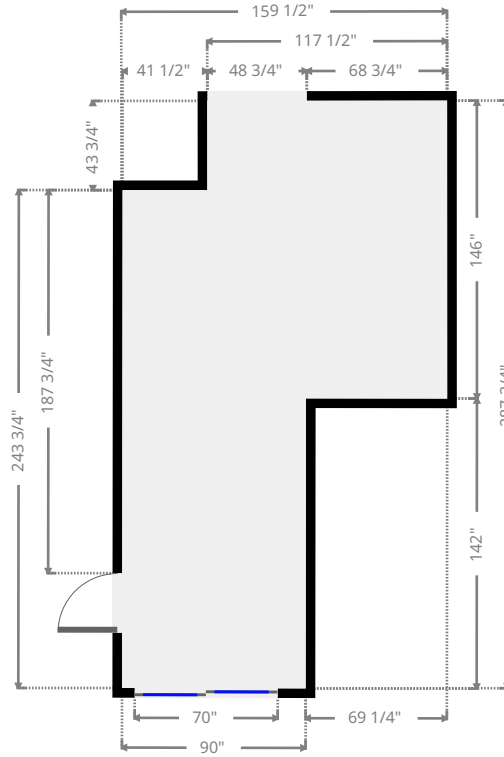
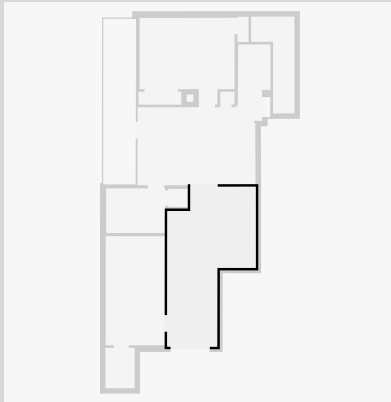
THIS FLOORPLAN IS PROVIDED WITHOUT WARRANTY OF ANY KIND. SENSOPIA DISCLAIMS ANY WARRANTY INCLUDING, WITHOUT LIMITATION, SATISFACTORY QUALITY OR ACCURACY OF DIMENSIONS.



Gresley #53

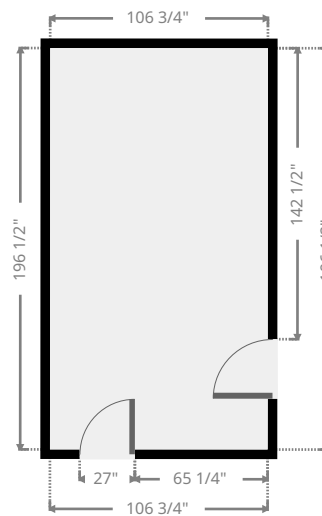
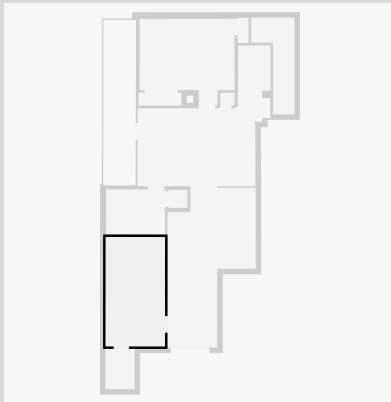
Kitchen

Width: 159 1/2"
 Length: 287 3/4"
 Area: 237.08 sq ft
 Perimeter: 893 3/4"



Bedroom

Width: 106 3/4"
 Length: 196 1/2"
 Area: 145.59 sq ft
 Perimeter: 606 1/2"



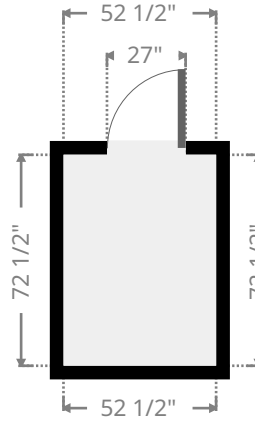
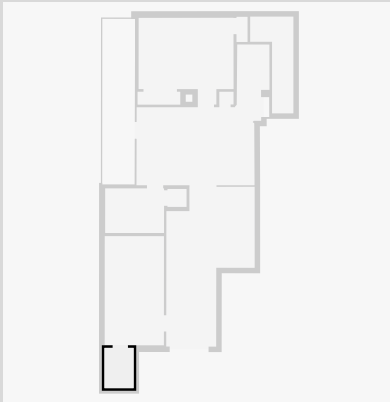
THIS FLOORPLAN IS PROVIDED WITHOUT WARRANTY OF ANY KIND. SENSOPIA DISCLAIMS ANY WARRANTY INCLUDING, WITHOUT LIMITATION, SATISFACTORY QUALITY OR ACCURACY OF DIMENSIONS.



Gresley #53

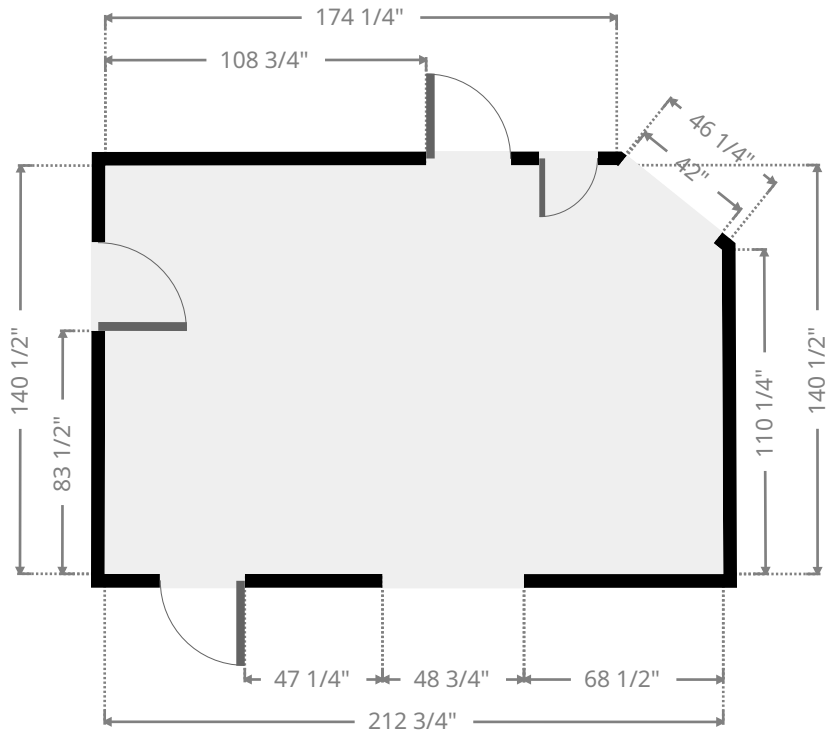
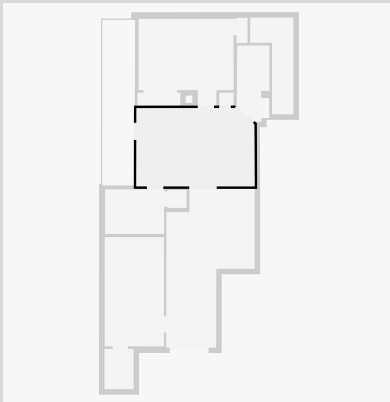
Closet

Width: 52 1/2"
 Length: 72 1/2"
 Area: 26.45 sq ft
 Perimeter: 250"

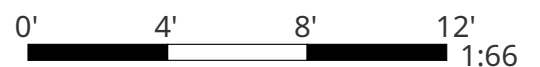


Living Room

Width: 140 1/2"
 Length: 212 3/4"
 Area: 203.53 sq ft
 Perimeter: 687"



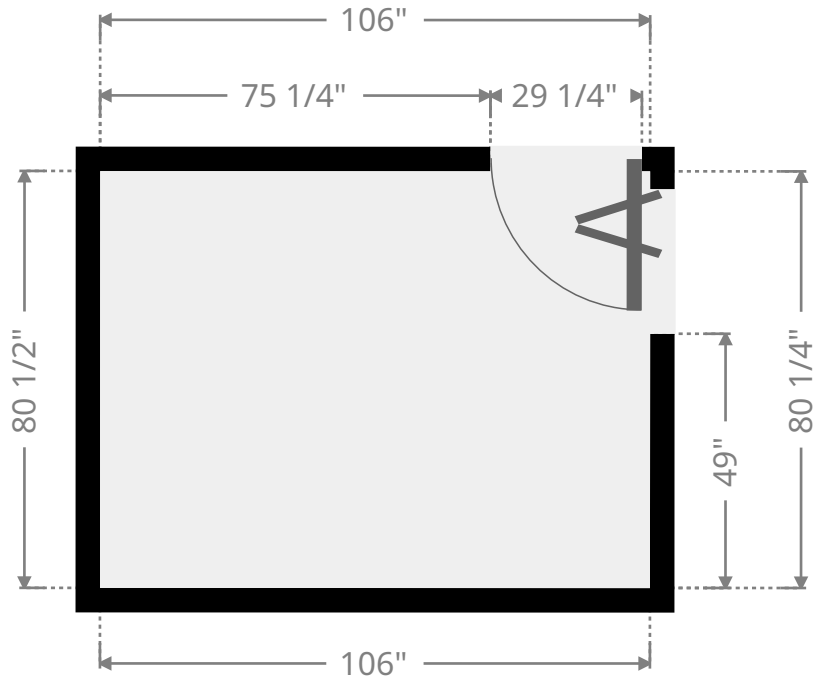
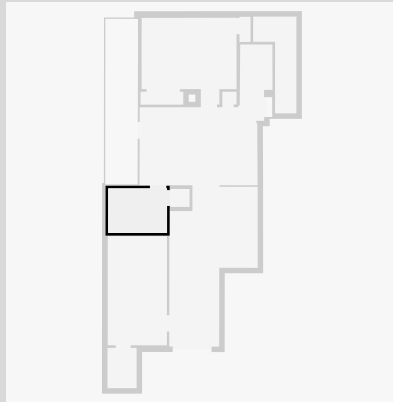
THIS FLOORPLAN IS PROVIDED WITHOUT WARRANTY OF ANY KIND. SENSOPIA DISCLAIMS ANY WARRANTY INCLUDING, WITHOUT LIMITATION, SATISFACTORY QUALITY OR ACCURACY OF DIMENSIONS.



Gresley #53

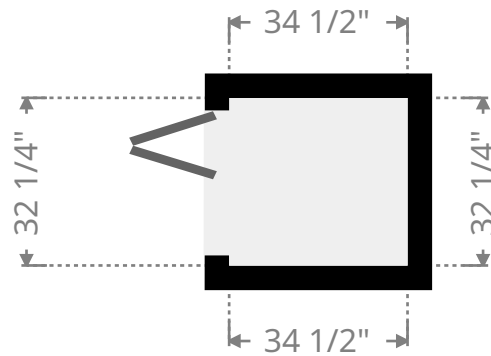
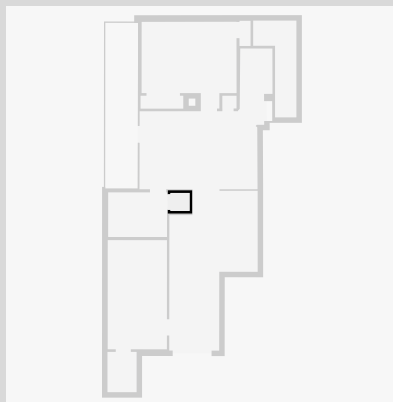
Bathroom

Width: 80 1/2"
 Length: 106"
 Area: 59.17 sq ft
 Perimeter: 372 3/4"

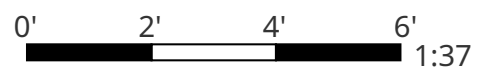


Laundry Room

Width: 32 1/4"
 Length: 34 1/2"
 Area: 7.72 sq ft
 Perimeter: 133 1/2"



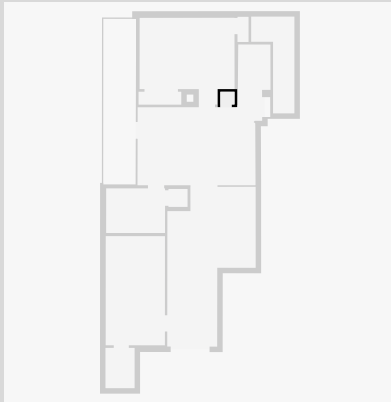
THIS FLOORPLAN IS PROVIDED WITHOUT WARRANTY OF ANY KIND. SENSOPIA DISCLAIMS ANY WARRANTY INCLUDING, WITHOUT LIMITATION, SATISFACTORY QUALITY OR ACCURACY OF DIMENSIONS.



Gresley #53

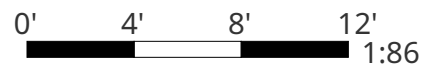
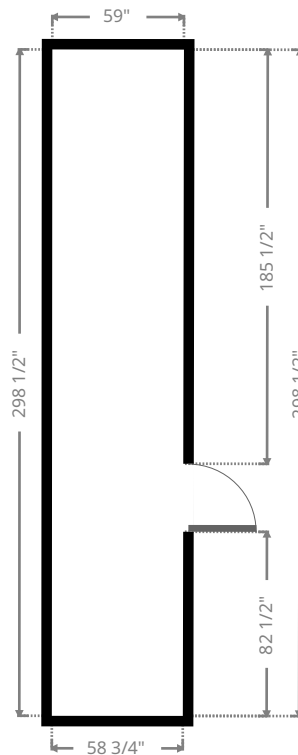
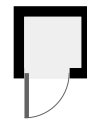
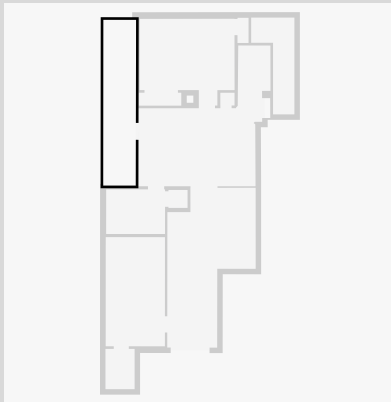
Closet

Width: 23"
Length: 25 1/2"
Area: 4.06 sq ft
Perimeter: 97"



Balcony

Width: 59"
Length: 298 1/2"
Area: 122.01 sq ft
Perimeter: 714 3/4"

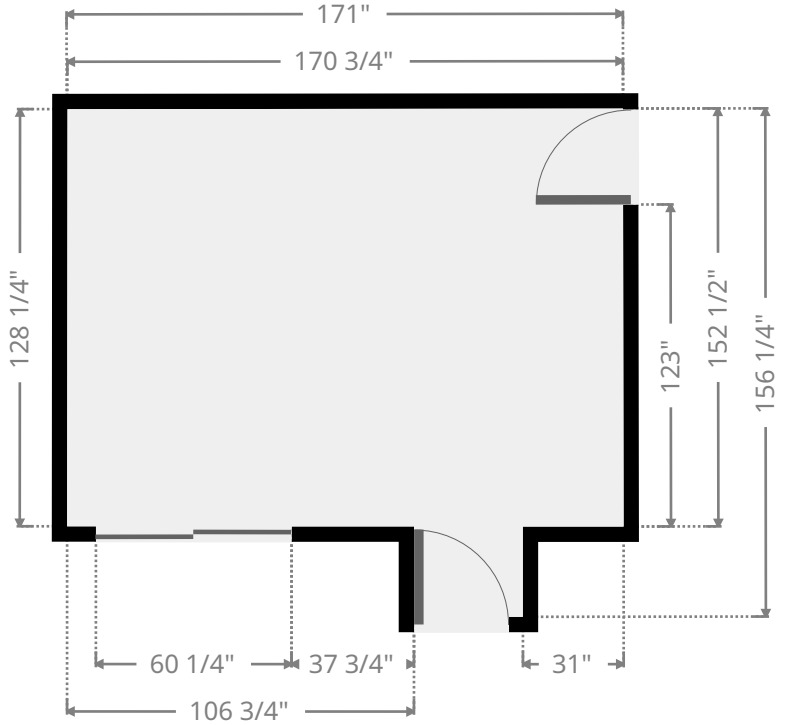
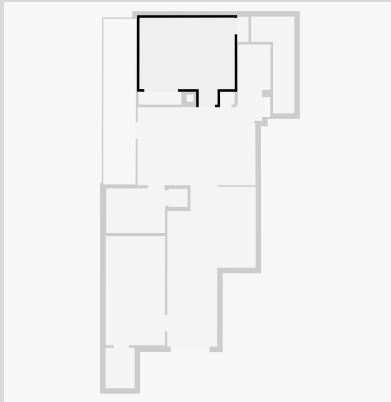


THIS FLOORPLAN IS PROVIDED WITHOUT WARRANTY OF ANY KIND. SENSOPIA DISCLAIMS ANY WARRANTY INCLUDING, WITHOUT LIMITATION, SATISFACTORY QUALITY OR ACCURACY OF DIMENSIONS.

Gresley #53

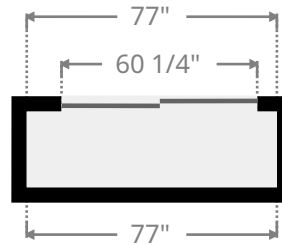
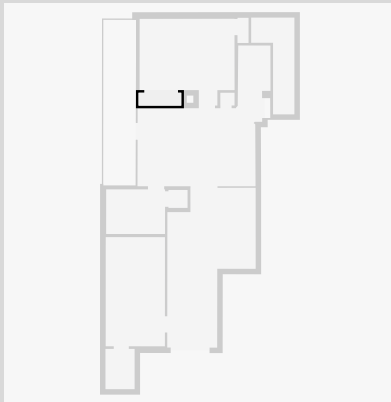
Bedroom

Width: 156 1/4"
 Length: 171"
 Area: 158.86 sq ft
 Perimeter: 654 1/4"



Closet

Width: 23 1/4"
 Length: 77"
 Area: 12.44 sq ft
 Perimeter: 200 1/2"



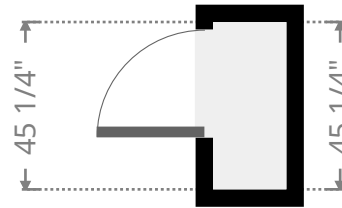
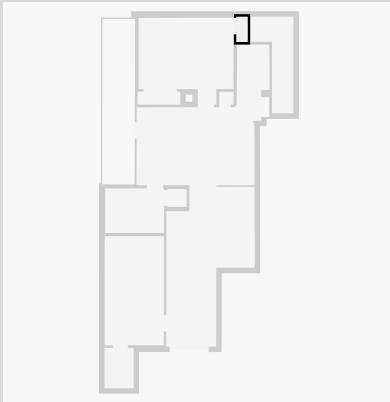
THIS FLOORPLAN IS PROVIDED WITHOUT WARRANTY OF ANY KIND. SENSOPIA DISCLAIMS ANY WARRANTY INCLUDING, WITHOUT LIMITATION, SATISFACTORY QUALITY OR ACCURACY OF DIMENSIONS.



Gresley #53

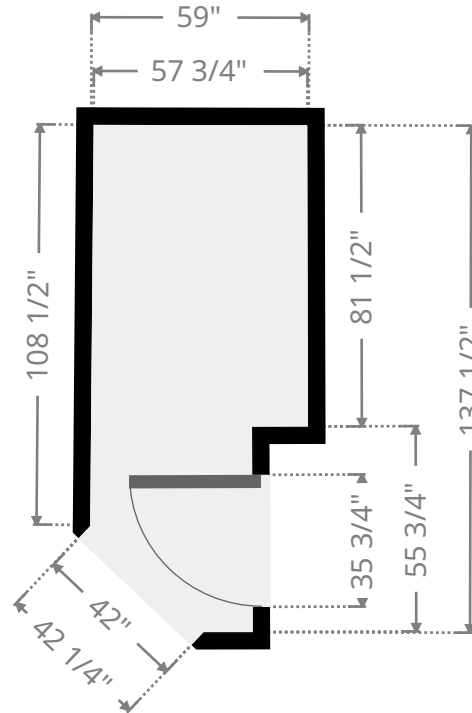
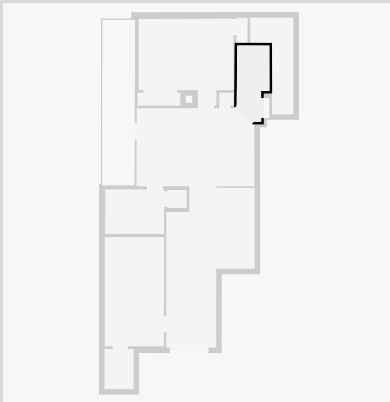
Closet

Width: 19 3/4"
 Length: 45 1/4"
 Area: 6.25 sq ft
 Perimeter: 130 1/2"



Hall

Width: 59"
 Length: 137 1/2"
 Area: 46.99 sq ft
 Perimeter: 374 1/4"



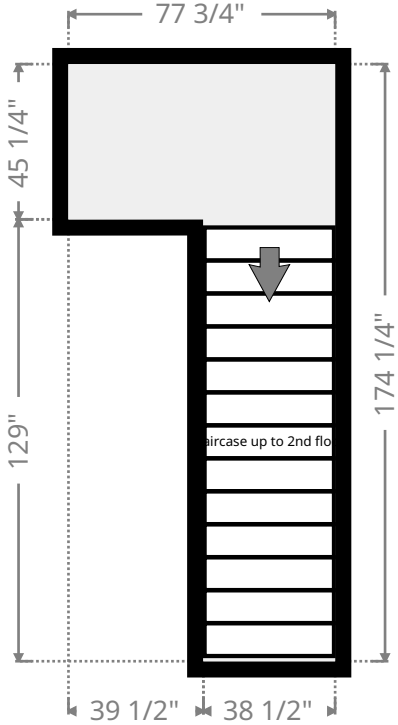
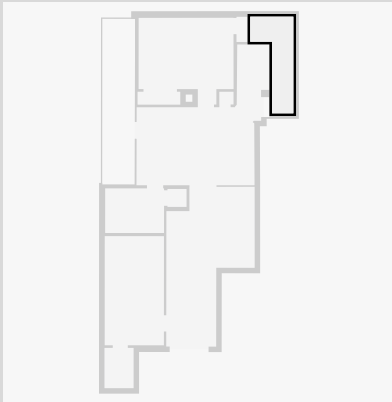
THIS FLOORPLAN IS PROVIDED WITHOUT WARRANTY OF ANY KIND. SENSOPIA DISCLAIMS ANY WARRANTY INCLUDING, WITHOUT LIMITATION, SATISFACTORY QUALITY OR ACCURACY OF DIMENSIONS.



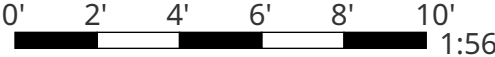
Gresley #53

Hall

Width:	77 3/4"
Length:	174 1/4"
Area	58.89 sq ft
Perimeter	504"



THIS FLOORPLAN IS PROVIDED WITHOUT WARRANTY OF ANY KIND. SENSOPIA DISCLAIMS ANY WARRANTY INCLUDING, WITHOUT LIMITATION, SATISFACTORY QUALITY OR ACCURACY OF DIMENSIONS.

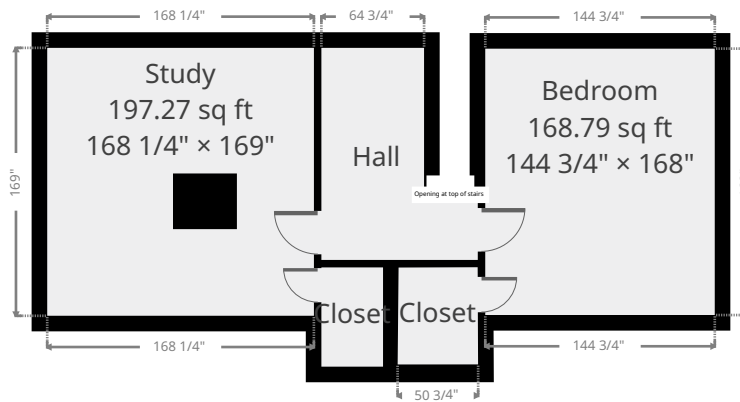


Gresley #53

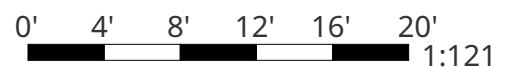
Statistics

Area: 1756 sq ft
2 Floors
3 Bedrooms
1 Bathroom

2nd Floor



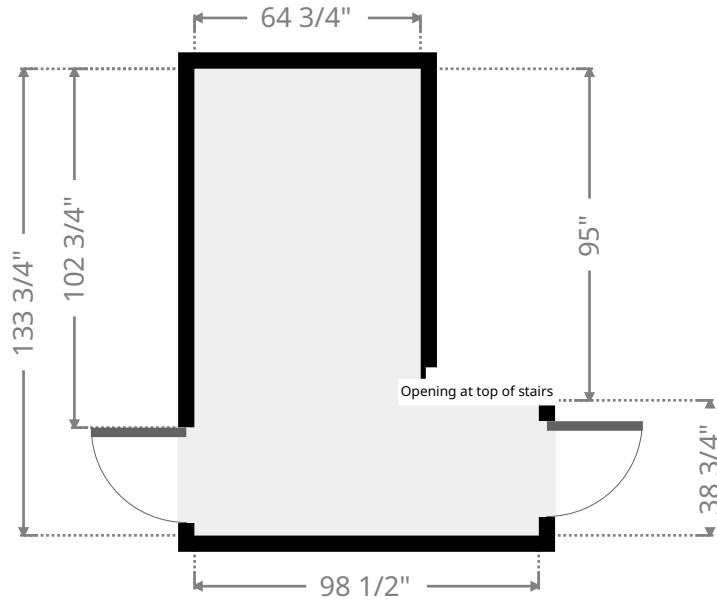
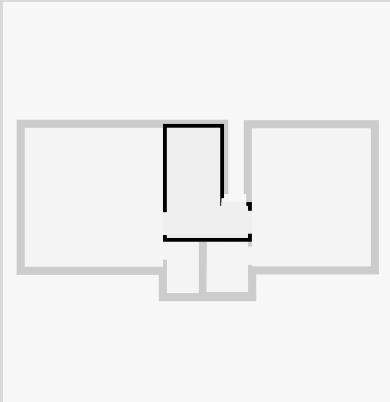
THIS FLOORPLAN IS PROVIDED WITHOUT WARRANTY OF ANY KIND. SENSOPIA DISCLAIMS ANY WARRANTY INCLUDING, WITHOUT LIMITATION, SATISFACTORY QUALITY OR ACCURACY OF DIMENSIONS.



Gresley #53

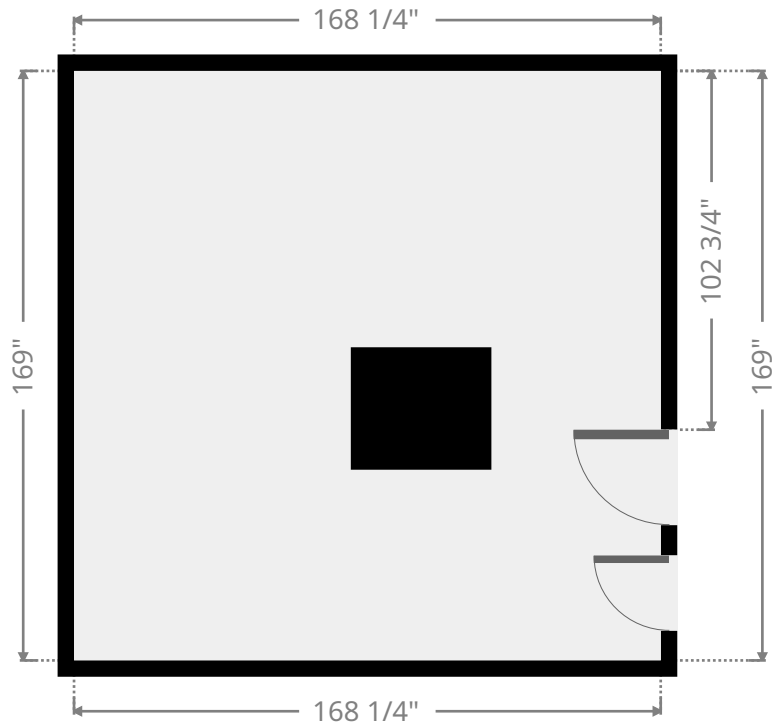
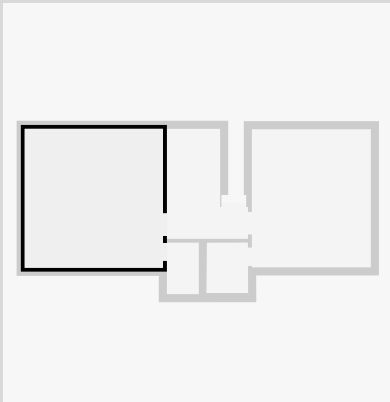
Hall

Width: 98 1/2"
 Length: 133 3/4"
 Area: 69.23 sq ft
 Perimeter: 464 3/4"



Study

Width: 168 1/4"
 Length: 169"
 Area: 197.27 sq ft
 Perimeter: 674 1/4"



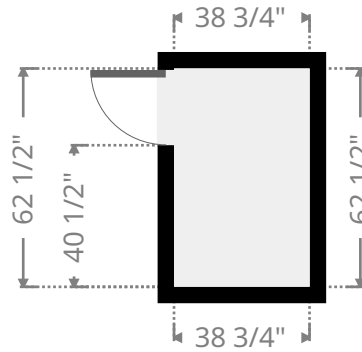
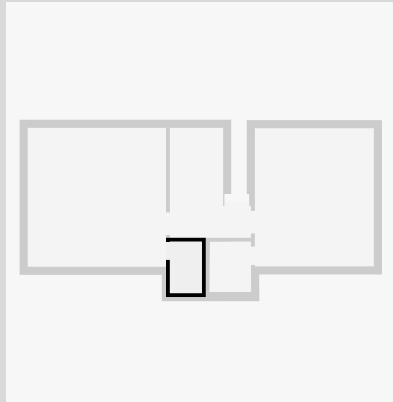
THIS FLOORPLAN IS PROVIDED WITHOUT WARRANTY OF ANY KIND. SENSOPIA DISCLAIMS ANY WARRANTY INCLUDING, WITHOUT LIMITATION, SATISFACTORY QUALITY OR ACCURACY OF DIMENSIONS.



Gresley #53

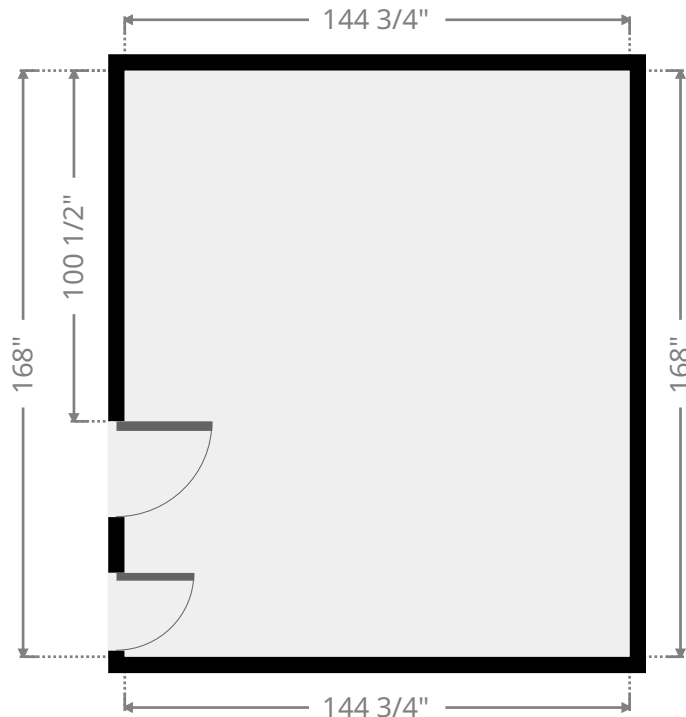
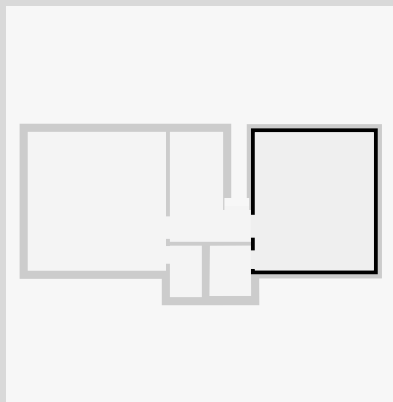
Closet

Width: 38 3/4"
 Length: 62 1/2"
 Area: 16.88 sq ft
 Perimeter: 202 3/4"

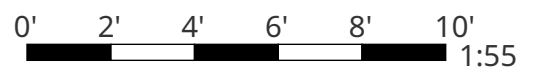


Bedroom

Width: 144 3/4"
 Length: 168"
 Area: 168.79 sq ft
 Perimeter: 625 1/4"



THIS FLOORPLAN IS PROVIDED WITHOUT WARRANTY OF ANY KIND. SENSOPIA DISCLAIMS ANY WARRANTY INCLUDING, WITHOUT LIMITATION, SATISFACTORY QUALITY OR ACCURACY OF DIMENSIONS.



Gresley #53

Closet

Width: 50 3/4"
Length: 61 1/4"
Area: 21.38 sq ft
Perimeter: 223"

