

# Gresley 22B, 23B, 24B

## Statistics

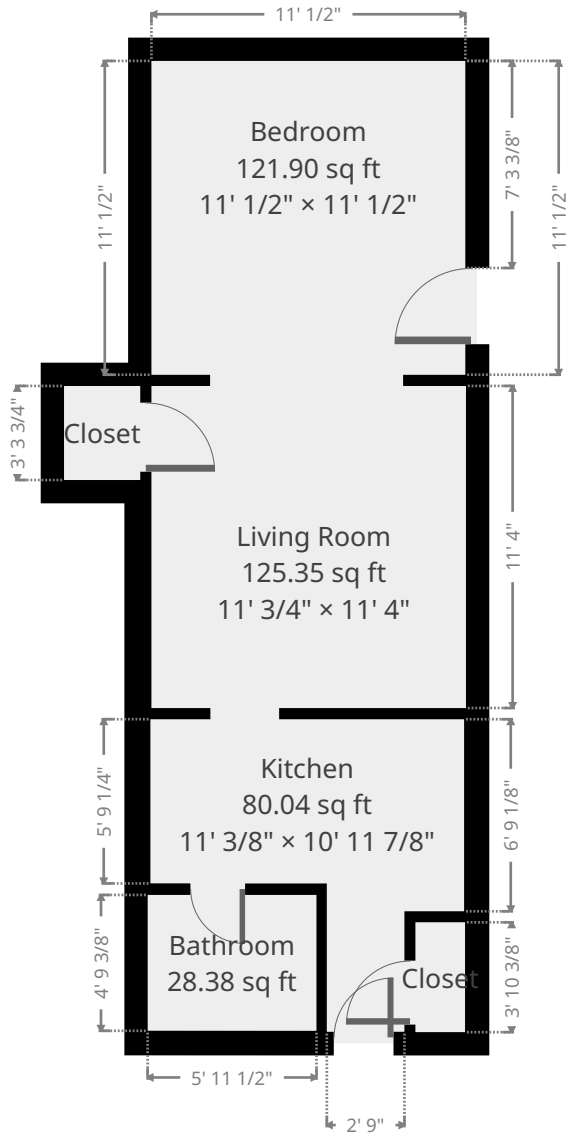
Area: 371 sq ft

1 Floor

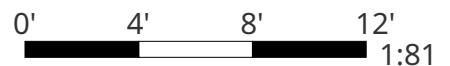
1 Bedroom

1 Bathroom

## Ground Floor



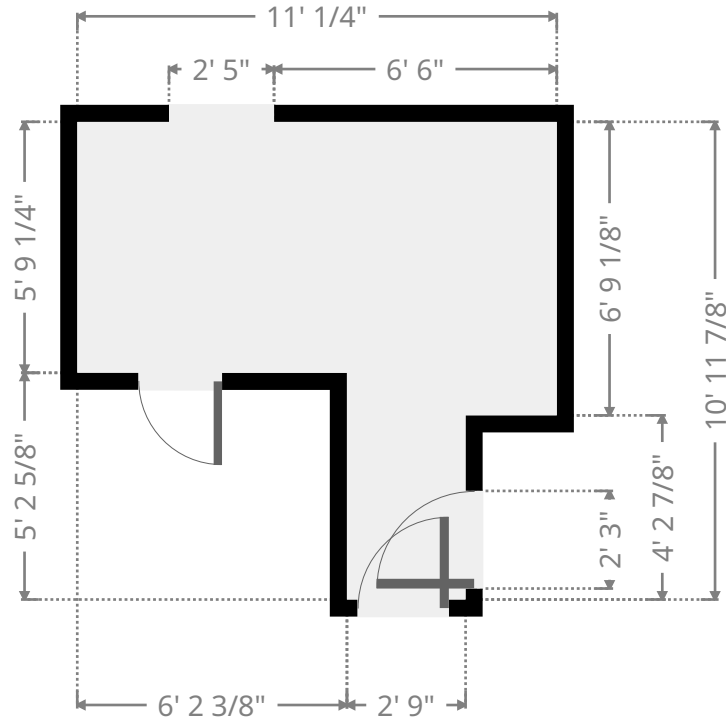
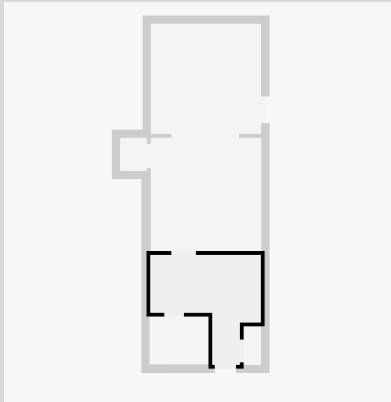
THIS FLOORPLAN IS PROVIDED WITHOUT WARRANTY OF ANY KIND. SENSOPIA DISCLAIMS ANY WARRANTY INCLUDING, WITHOUT LIMITATION, SATISFACTORY QUALITY OR ACCURACY OF DIMENSIONS.



# Gresley 22B, 23B, 24B

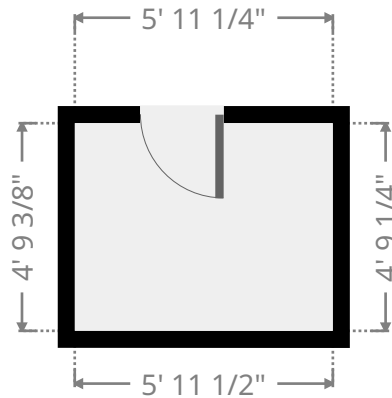
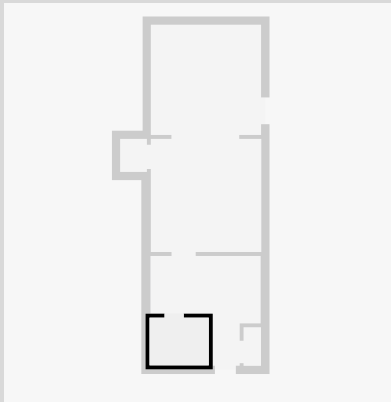
## Kitchen

Width: 10' 11 7/8"  
 Length: 11' 3/8"  
 Area: 80.04 sq ft  
 Perimeter: 44' 3/4"



## Bathroom

Width: 4' 9 3/8"  
 Length: 5' 11 1/4"  
 Area: 28.38 sq ft  
 Perimeter: 21' 5 1/4"



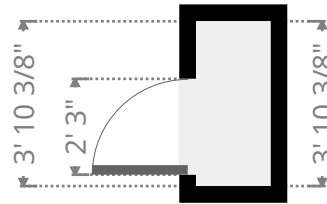
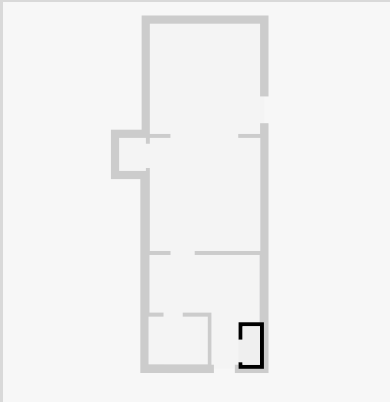
THIS FLOORPLAN IS PROVIDED WITHOUT WARRANTY OF ANY KIND. SENSOPIA DISCLAIMS ANY WARRANTY INCLUDING, WITHOUT LIMITATION, SATISFACTORY QUALITY OR ACCURACY OF DIMENSIONS.



# Gresley 22B, 23B, 24B

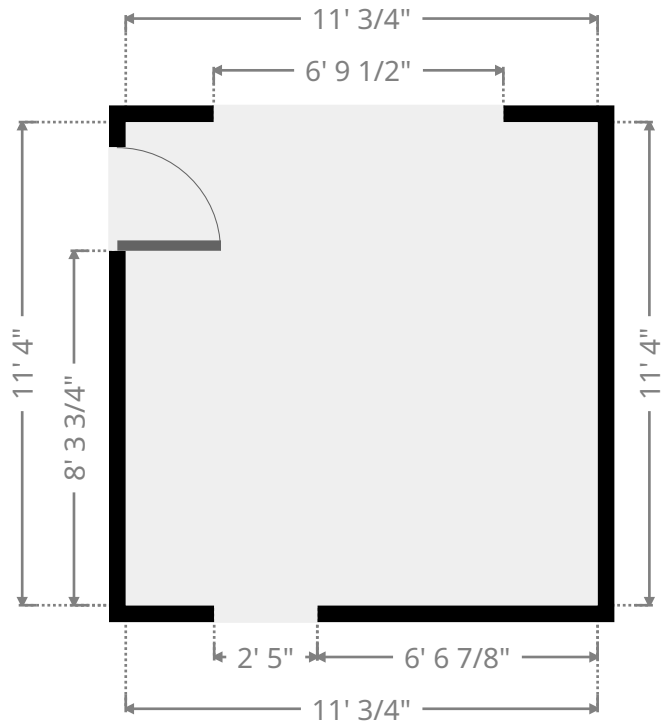
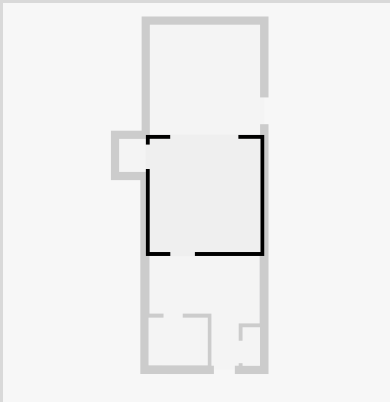
## Closet

Width: 1' 8 7/8"  
 Length: 3' 10 3/8"  
 Area: 6.74 sq ft  
 Perimeter: 11' 2 5/8"



## Living Room

Width: 11' 3/4"  
 Length: 11' 4"  
 Area: 125.35 sq ft  
 Perimeter: 44' 9 1/2"

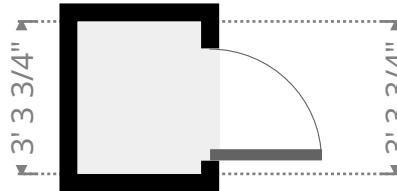
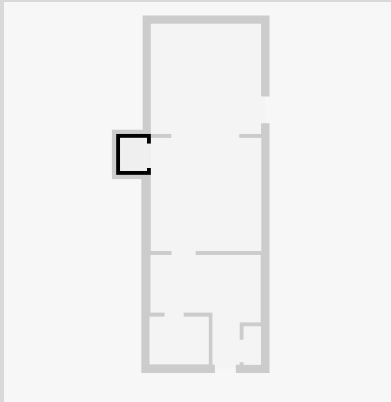


THIS FLOORPLAN IS PROVIDED WITHOUT WARRANTY OF ANY KIND. SENSOPIA DISCLAIMS ANY WARRANTY INCLUDING, WITHOUT LIMITATION, SATISFACTORY QUALITY OR ACCURACY OF DIMENSIONS.

# Gresley 22B, 23B, 24B

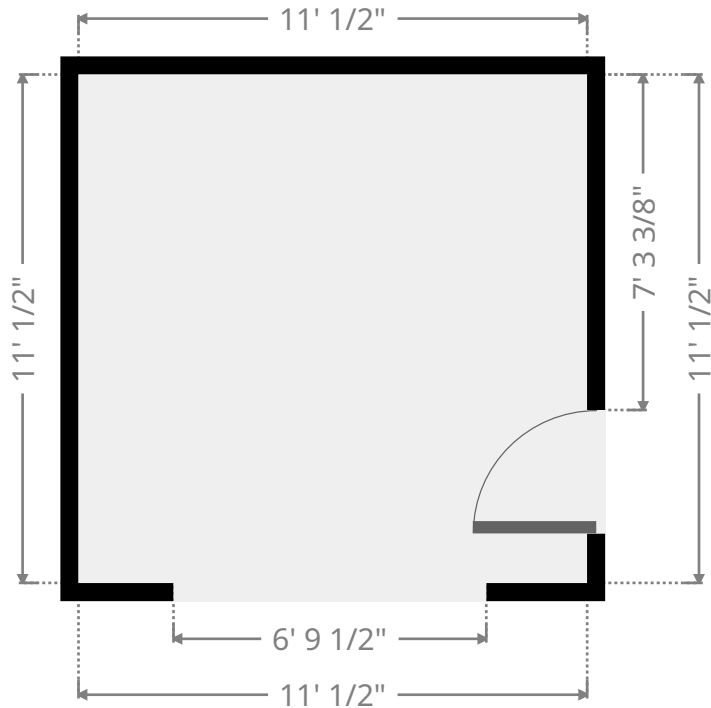
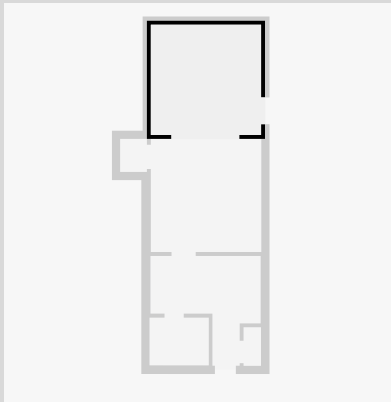
## Closet

Width: 2' 8 1/4"  
 Length: 3' 3 3/4"  
 Area: 8.88 sq ft  
 Perimeter: 11' 11 3/4"



## Bedroom

Width: 11' 1/2"  
 Length: 11' 1/2"  
 Area: 121.90 sq ft  
 Perimeter: 44' 2"



THIS FLOORPLAN IS PROVIDED WITHOUT WARRANTY OF ANY KIND. SENSOPIA DISCLAIMS ANY WARRANTY INCLUDING, WITHOUT LIMITATION, SATISFACTORY QUALITY OR ACCURACY OF DIMENSIONS.