

Gresley #22A, 23A, 24A

Statistics

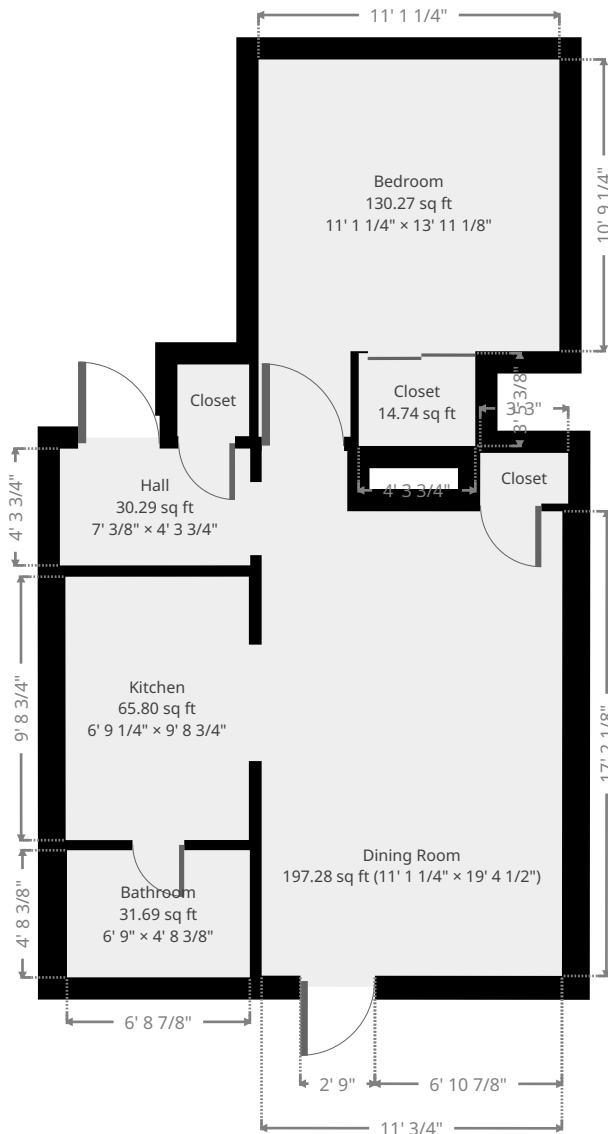
Area: 483 sq ft

1 Floor

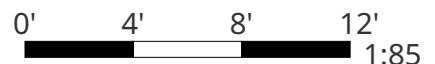
1 Bedroom

1 Bathroom

Ground Floor



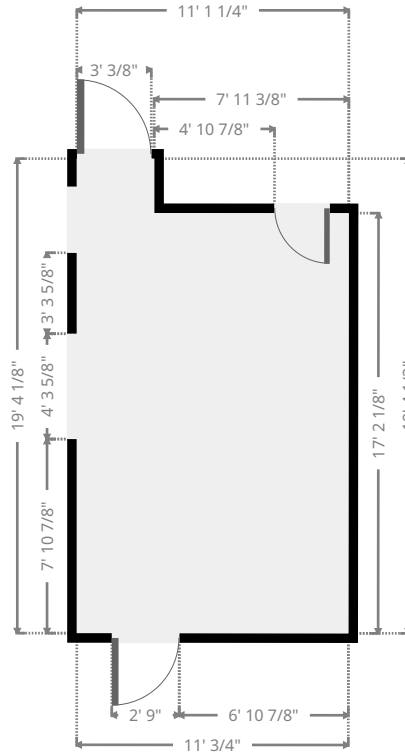
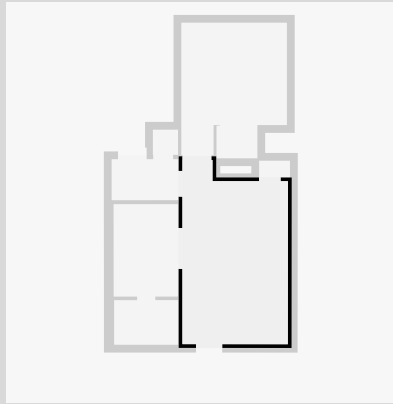
THIS FLOORPLAN IS PROVIDED WITHOUT WARRANTY OF ANY KIND. SENSOPIA DISCLAIMS ANY WARRANTY INCLUDING, WITHOUT LIMITATION, SATISFACTORY QUALITY OR ACCURACY OF DIMENSIONS.



Gresley #22A, 23A, 24A

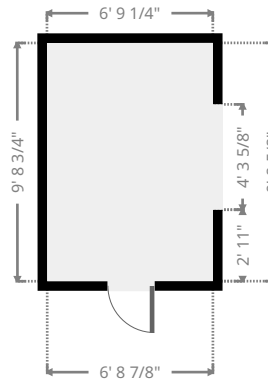
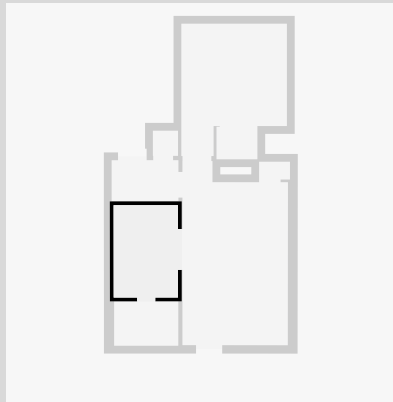
Dining Room

Width: 11' 1 1/4"
 Length: 19' 4 1/2"
 Area: 197.28 sq ft
 Perimeter: 60' 11 1/8"



Kitchen

Width: 6' 9 1/4"
 Length: 9' 8 3/4"
 Area: 65.80 sq ft
 Perimeter: 32' 11 3/4"



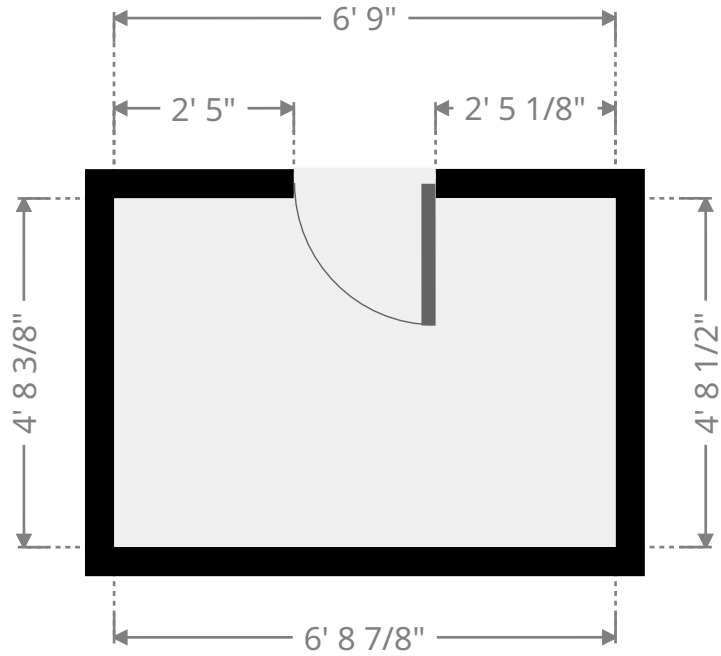
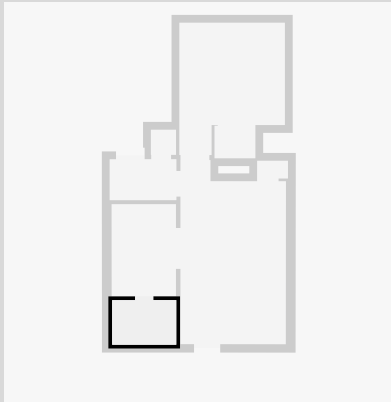
THIS FLOORPLAN IS PROVIDED WITHOUT WARRANTY OF ANY KIND. SENSOPIA DISCLAIMS ANY WARRANTY INCLUDING, WITHOUT LIMITATION, SATISFACTORY QUALITY OR ACCURACY OF DIMENSIONS.



Gresley #22A, 23A, 24A

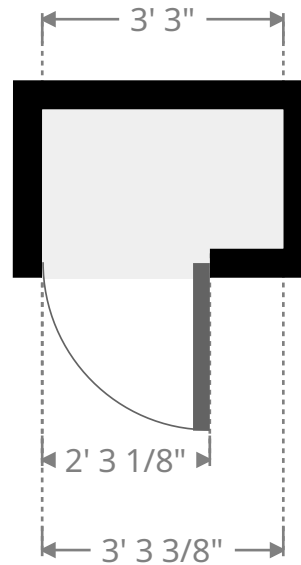
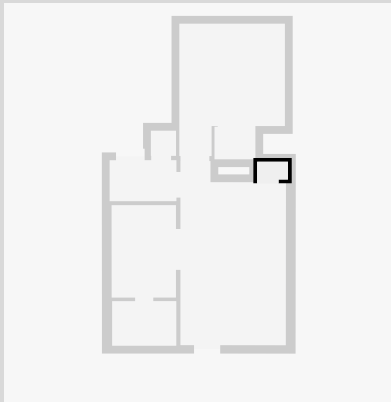
Bathroom

Width: 4' 8 3/8"
 Length: 6' 9"
 Area: 31.69 sq ft
 Perimeter: 22' 10 5/8"

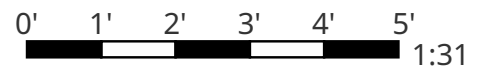


Closet

Width: 1' 10 1/2"
 Length: 3' 3"
 Area: 6.08 sq ft
 Perimeter: 10' 2 7/8"



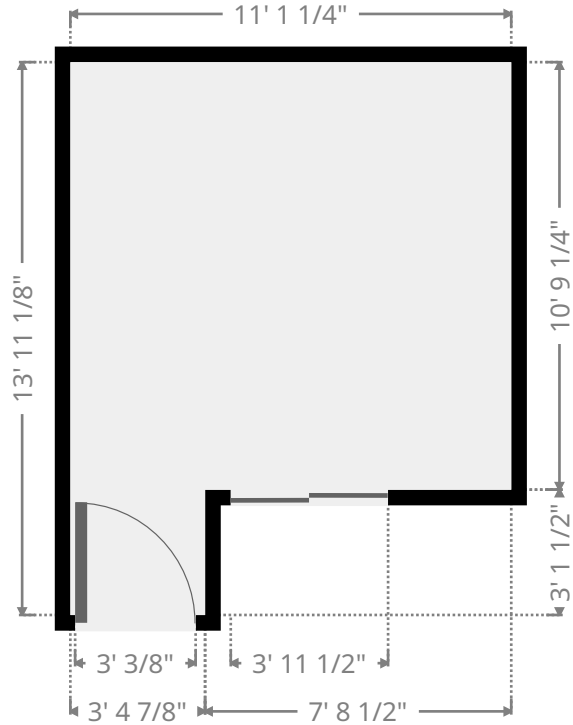
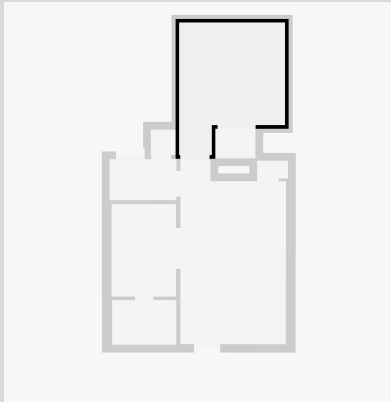
THIS FLOORPLAN IS PROVIDED WITHOUT WARRANTY OF ANY KIND. SENSOPIA DISCLAIMS ANY WARRANTY INCLUDING, WITHOUT LIMITATION, SATISFACTORY QUALITY OR ACCURACY OF DIMENSIONS.



Gresley #22A, 23A, 24A

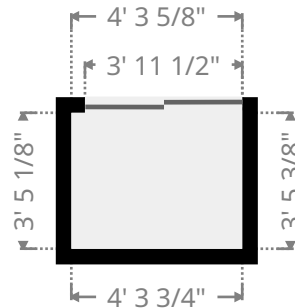
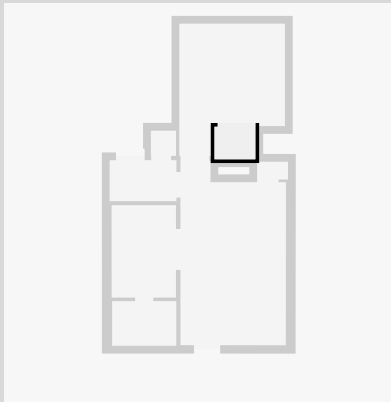
Bedroom

Width: 11' 1 1/4"
 Length: 13' 11 1/8"
 Area: 130.27 sq ft
 Perimeter: 50' 5/8"



Closet

Width: 3' 5 1/8"
 Length: 4' 3 5/8"
 Area: 14.74 sq ft
 Perimeter: 15' 5 1/2"



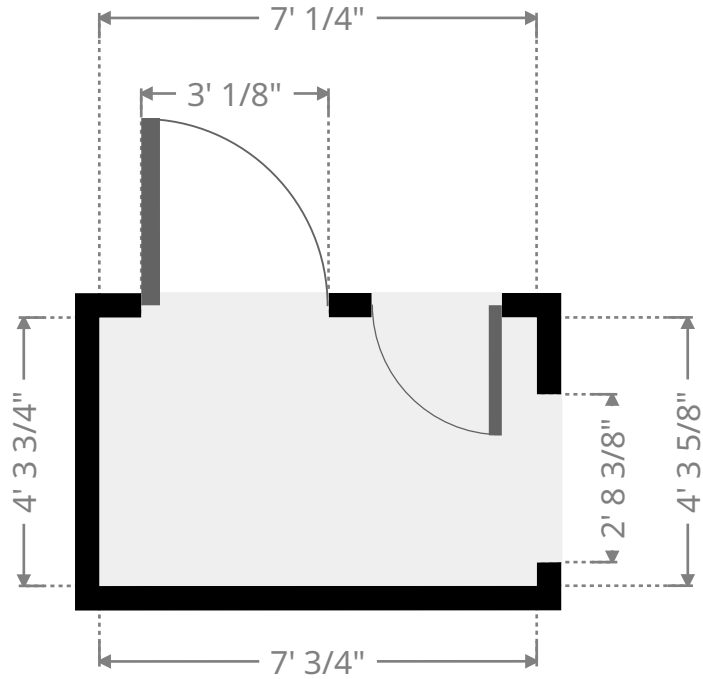
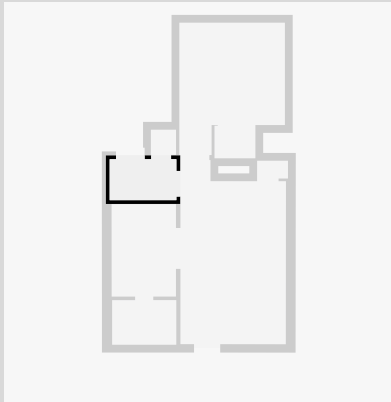
THIS FLOORPLAN IS PROVIDED WITHOUT WARRANTY OF ANY KIND. SENSOPIA DISCLAIMS ANY WARRANTY INCLUDING, WITHOUT LIMITATION, SATISFACTORY QUALITY OR ACCURACY OF DIMENSIONS.



Gresley #22A, 23A, 24A

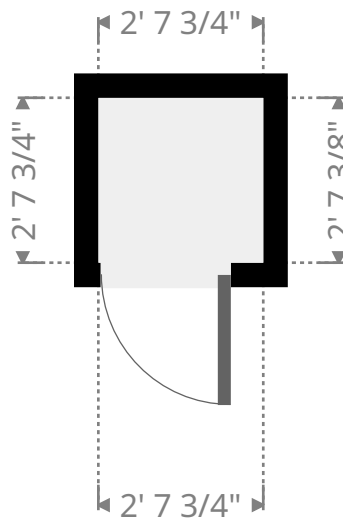
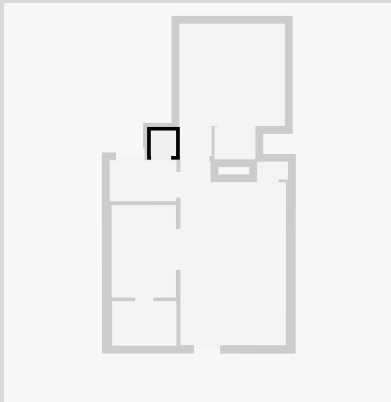
Hall

Width: 4' 3 3/4"
 Length: 7' 3/8"
 Area: 30.29 sq ft
 Perimeter: 22' 8 1/8"



Closet

Width: 2' 7 3/4"
 Length: 2' 7 3/4"
 Area: 7.02 sq ft
 Perimeter: 10' 7 1/8"



THIS FLOORPLAN IS PROVIDED WITHOUT WARRANTY OF ANY KIND. SENSOPIA DISCLAIMS ANY WARRANTY INCLUDING, WITHOUT LIMITATION, SATISFACTORY QUALITY OR ACCURACY OF DIMENSIONS.

