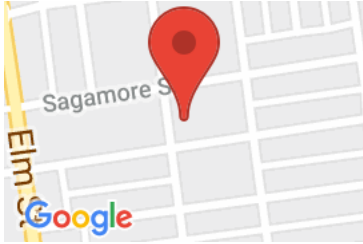


# Gresley #15

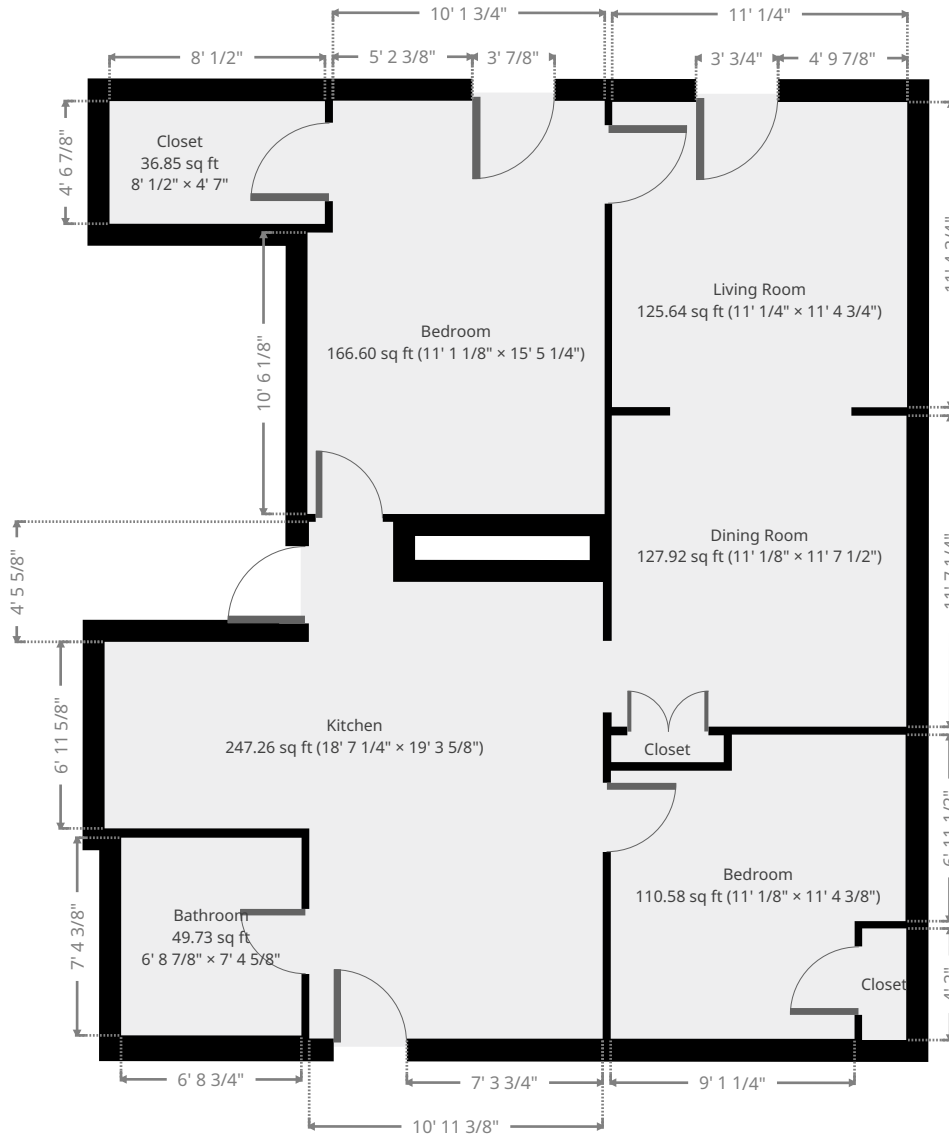
669 Chestnut Street, Manchester, NH, USA 03104



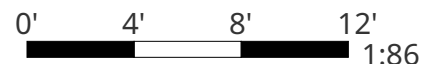
## Statistics

Area: 875 sq ft  
1 Floor  
2 Bedrooms  
1 Bathroom

## Ground Floor



THIS FLOORPLAN IS PROVIDED WITHOUT WARRANTY OF ANY KIND. SENSOPIA DISCLAIMS ANY WARRANTY INCLUDING, WITHOUT LIMITATION, SATISFACTORY QUALITY OR ACCURACY OF DIMENSIONS.



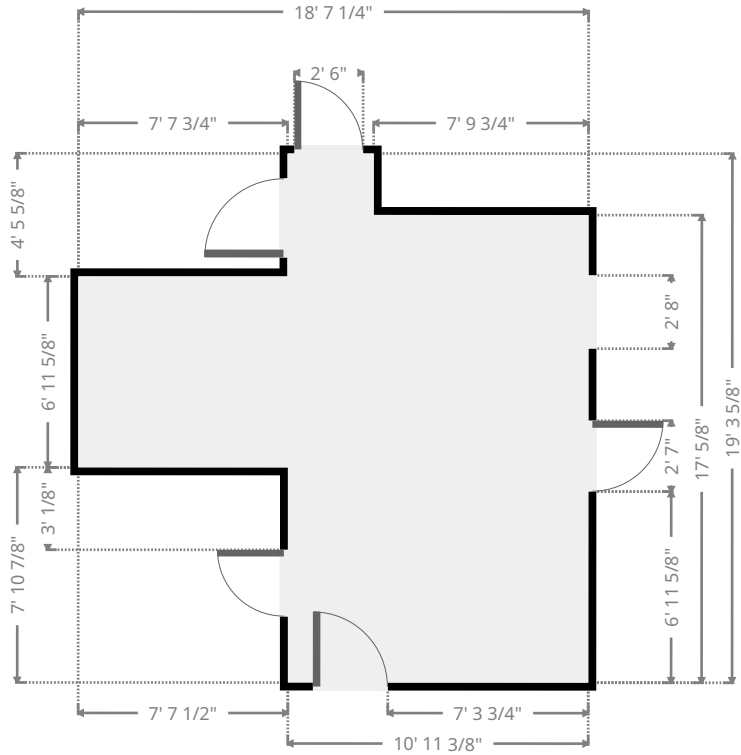
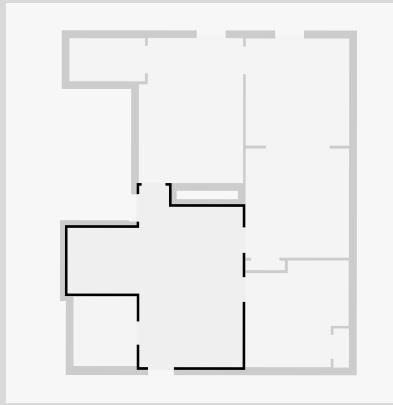
made with **magicplan**

# Gresley #15

669 Chestnut Street, Manchester, NH, USA 03104

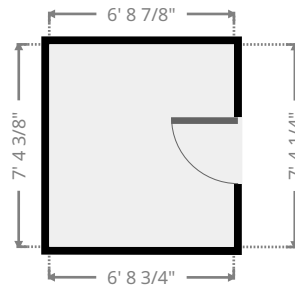
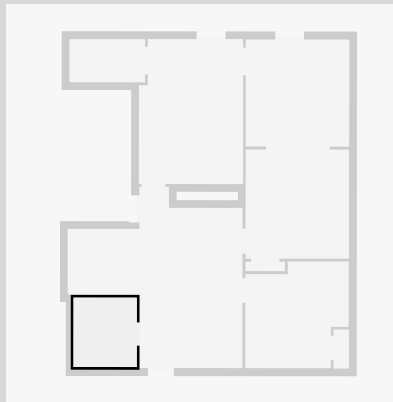
## Kitchen

Width: 18' 7 1/4"  
 Length: 19' 3 5/8"  
 Area: 247.26 sq ft  
 Perimeter: 75' 9 3/4"  
 Ceiling Height: 8' 7 3/4"

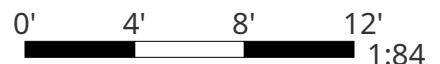


## Bathroom

Width: 6' 8 7/8"  
 Length: 7' 4 5/8"  
 Area: 49.73 sq ft  
 Perimeter: 28' 2 7/8"  
 Ceiling Height: 8' 7 3/4"



THIS FLOORPLAN IS PROVIDED WITHOUT WARRANTY OF ANY KIND. SENSOPIA DISCLAIMS ANY WARRANTY INCLUDING, WITHOUT LIMITATION, SATISFACTORY QUALITY OR ACCURACY OF DIMENSIONS.

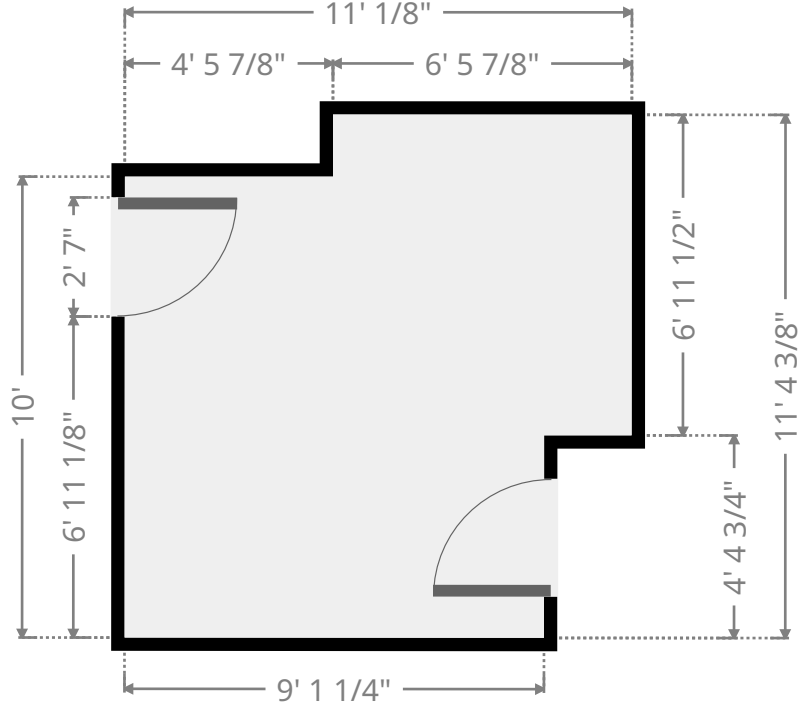
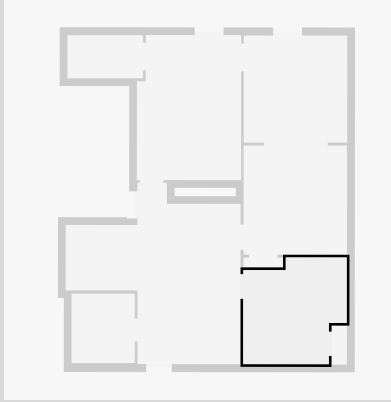


# Gresley #15

669 Chestnut Street, Manchester, NH, USA 03104

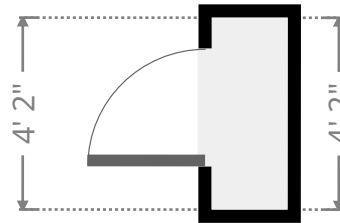
## Bedroom

Width: 11' 1/8"  
Length: 11' 4 3/8"  
Area: 110.58 sq ft  
Perimeter: 44' 8 3/4"  
Ceiling Height: 8' 7 3/4"



## Closet

Width: 1' 7 3/4"  
Length: 4' 2"  
Area: 6.86 sq ft  
Perimeter: 11' 7 1/2"  
Ceiling Height: 8' 7 3/4"



THIS FLOORPLAN IS PROVIDED WITHOUT WARRANTY OF ANY KIND. SENSOPIA DISCLAIMS ANY WARRANTY INCLUDING, WITHOUT LIMITATION, SATISFACTORY QUALITY OR ACCURACY OF DIMENSIONS.

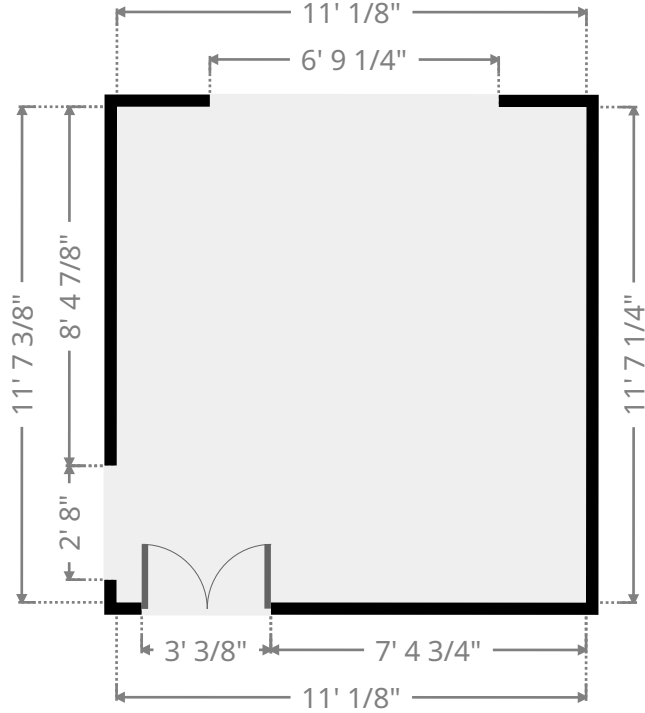
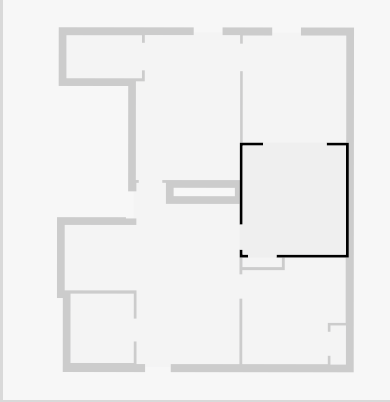


# Gresley #15

669 Chestnut Street, Manchester, NH, USA 03104

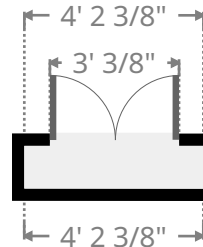
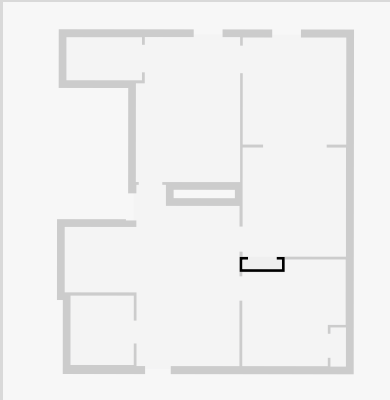
## Dining Room

Width: 11' 1/8"  
 Length: 11' 7 1/2"  
 Area: 127.92 sq ft  
 Perimeter: 45' 3 1/8"  
 Ceiling Height: 8' 7 3/4"



## Closet

Width: 1'  
 Length: 4' 2 3/8"  
 Area: 4.20 sq ft  
 Perimeter: 10' 4 3/4"  
 Ceiling Height: 8' 7 3/4"



THIS FLOORPLAN IS PROVIDED WITHOUT WARRANTY OF ANY KIND. SENSOPIA DISCLAIMS ANY WARRANTY INCLUDING, WITHOUT LIMITATION, SATISFACTORY QUALITY OR ACCURACY OF DIMENSIONS.

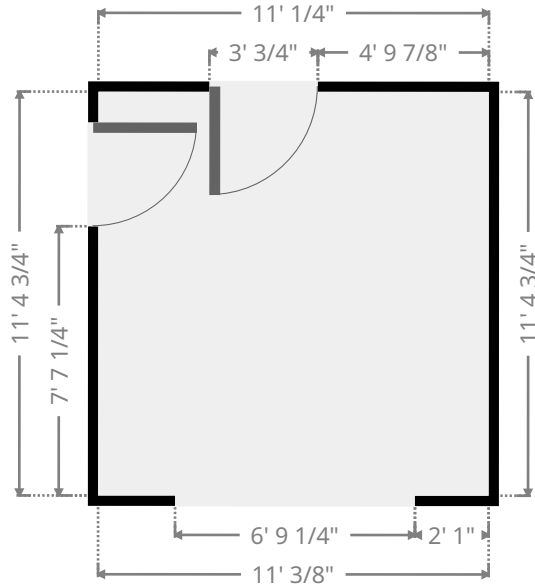
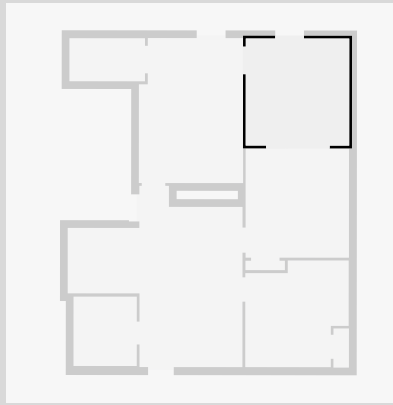


# Gresley #15

669 Chestnut Street, Manchester, NH, USA 03104

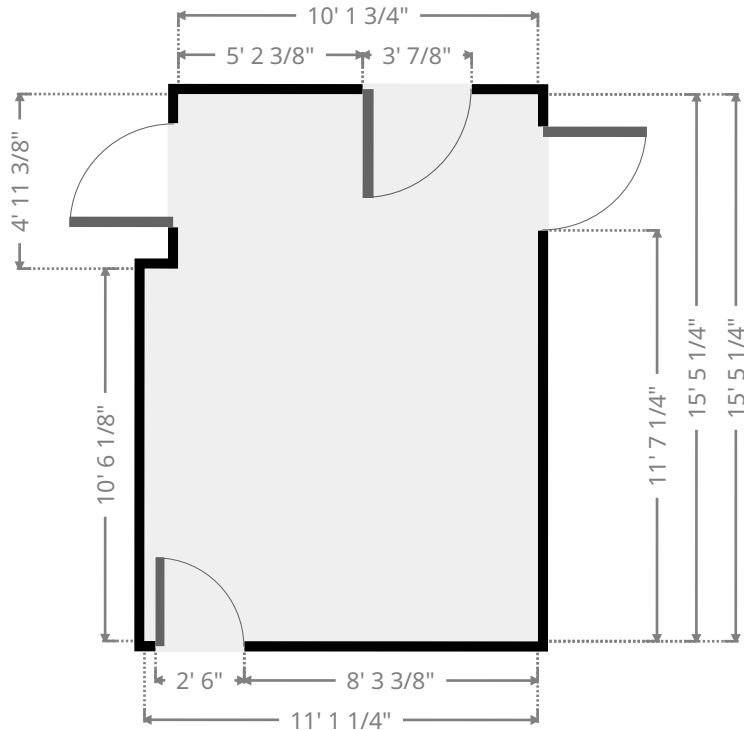
## Living Room

Width: 11' 1/4"  
 Length: 11' 4 3/4"  
 Area: 125.64 sq ft  
 Perimeter: 44' 10 1/8"  
 Ceiling Height: 8' 7 3/4"

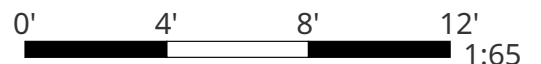


## Bedroom

Width: 11' 1 1/8"  
 Length: 15' 5 1/4"  
 Area: 166.60 sq ft  
 Perimeter: 53' 3/4"  
 Ceiling Height: 8' 7 3/4"



THIS FLOORPLAN IS PROVIDED WITHOUT WARRANTY OF ANY KIND. SENSOPIA DISCLAIMS ANY WARRANTY INCLUDING, WITHOUT LIMITATION, SATISFACTORY QUALITY OR ACCURACY OF DIMENSIONS.

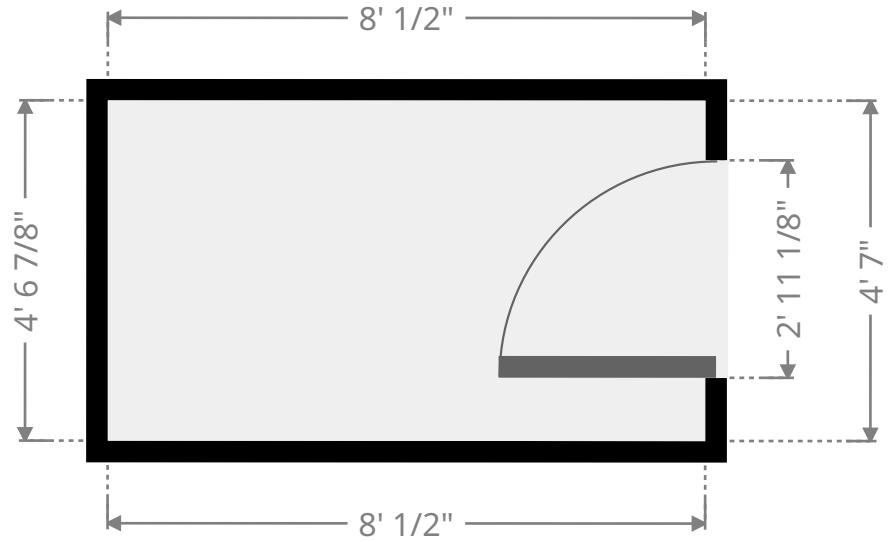
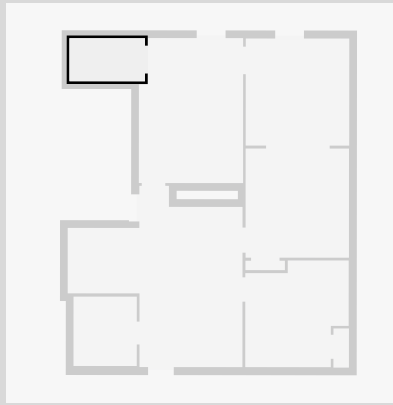


# Gresley #15

669 Chestnut Street, Manchester, NH, USA 03104

## Closet

Width: 4' 7"  
Length: 8' 1/2"  
Area: 36.85 sq ft  
Perimeter: 25' 3"  
Ceiling Height: 8' 7 3/4"



THIS FLOORPLAN IS PROVIDED WITHOUT WARRANTY OF ANY KIND. SENSOPIA DISCLAIMS ANY WARRANTY INCLUDING, WITHOUT LIMITATION, SATISFACTORY QUALITY OR ACCURACY OF DIMENSIONS.

