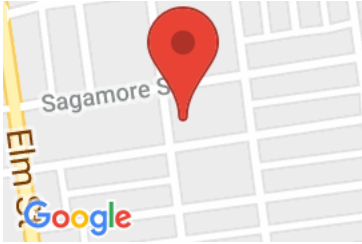


Gresley #14

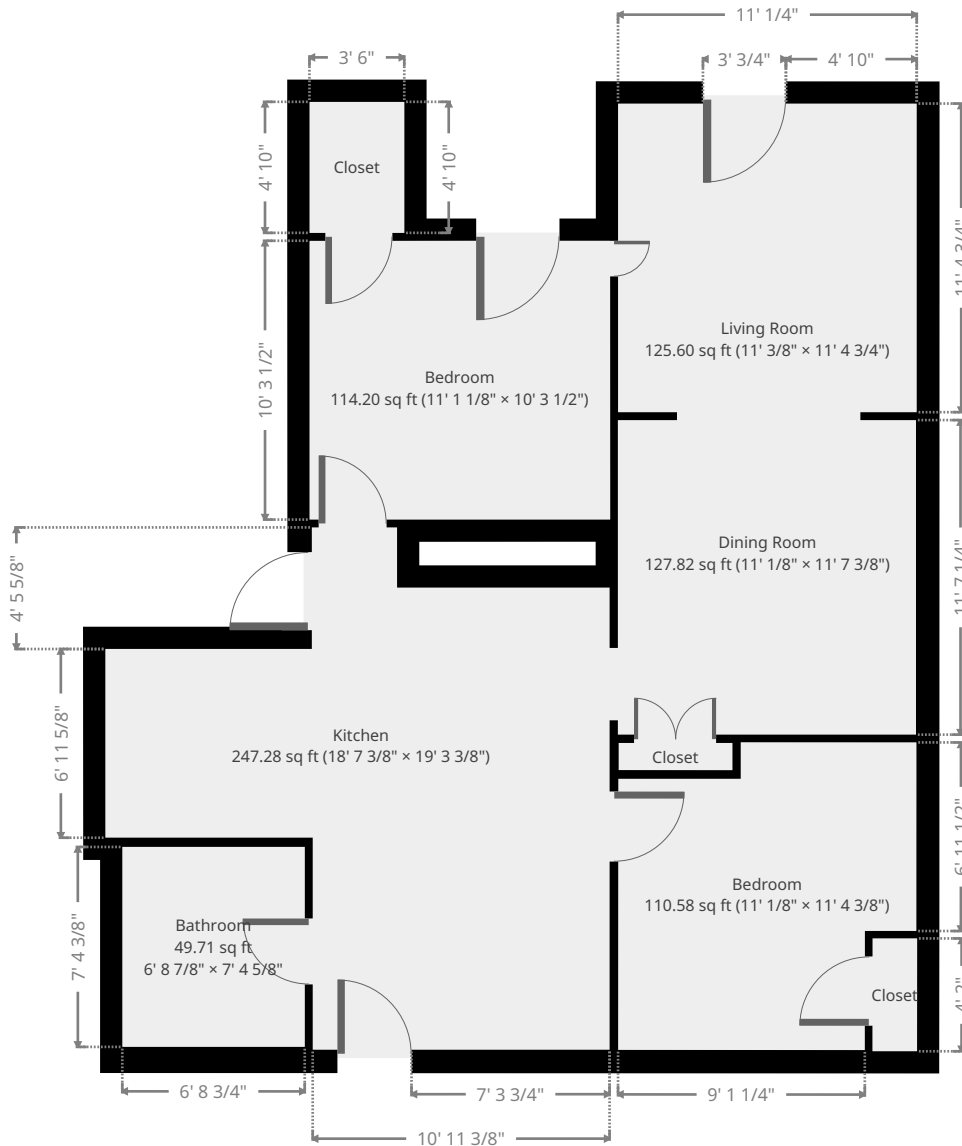
669 Chestnut Street, Manchester, NH, USA 03104



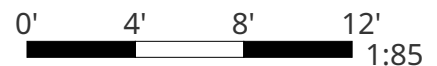
Statistics

Area: 803 sq ft
1 Floor
2 Bedrooms
1 Bathroom

Ground Floor



THIS FLOORPLAN IS PROVIDED WITHOUT WARRANTY OF ANY KIND. SENSOPIA DISCLAIMS ANY WARRANTY INCLUDING, WITHOUT LIMITATION, SATISFACTORY QUALITY OR ACCURACY OF DIMENSIONS.

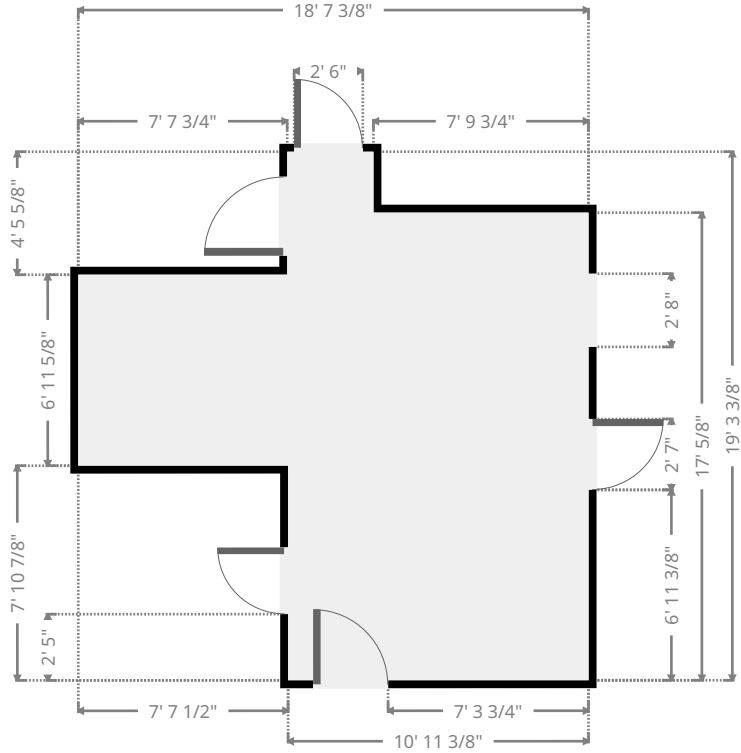
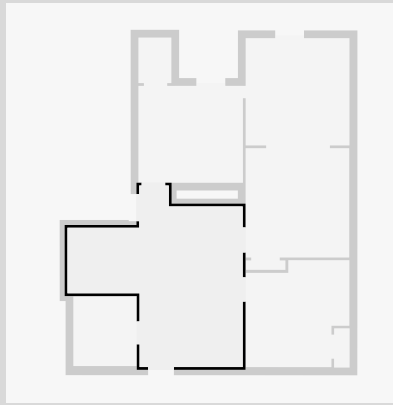


Gresley #14

669 Chestnut Street, Manchester, NH, USA 03104

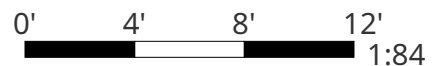
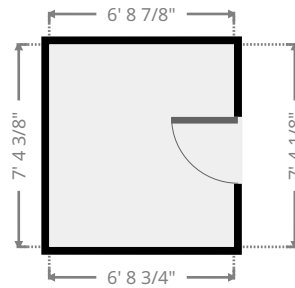
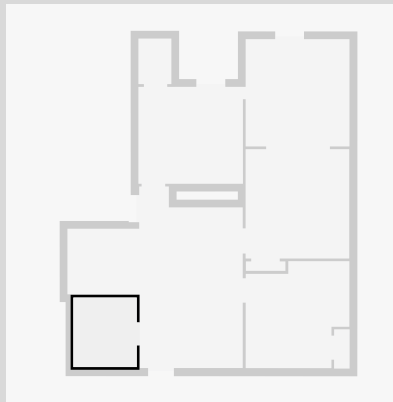
Kitchen

Width: 18' 7 3/8"
 Length: 19' 3 3/8"
 Area: 247.28 sq ft
 Perimeter: 75' 9 3/8"
 Ceiling Height: 8' 7 3/4"



Bathroom

Width: 6' 8 7/8"
 Length: 7' 4 5/8"
 Area: 49.71 sq ft
 Perimeter: 28' 2 3/4"
 Ceiling Height: 8' 7 3/4"



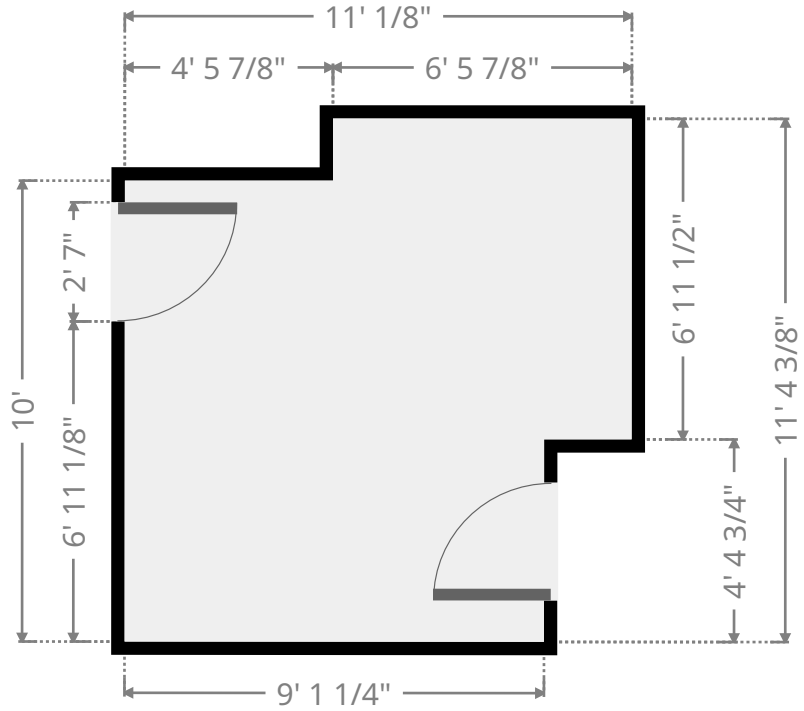
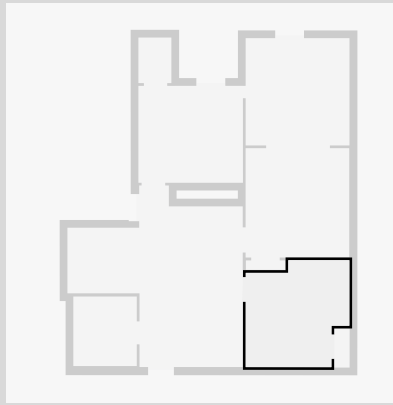
THIS FLOORPLAN IS PROVIDED WITHOUT WARRANTY OF ANY KIND. SENSOPIA DISCLAIMS ANY WARRANTY INCLUDING, WITHOUT LIMITATION, SATISFACTORY QUALITY OR ACCURACY OF DIMENSIONS.

Gresley #14

669 Chestnut Street, Manchester, NH, USA 03104

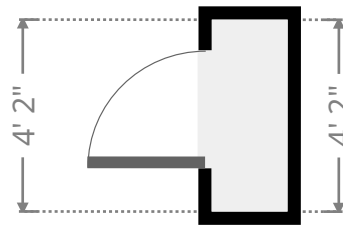
Bedroom

Width: 11' 1/8"
Length: 11' 4 3/8"
Area: 110.58 sq ft
Perimeter: 44' 8 3/4"
Ceiling Height: 8' 7 3/4"

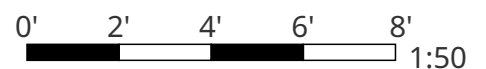


Closet

Width: 1' 7 3/4"
Length: 4' 2"
Area: 6.86 sq ft
Perimeter: 11' 7 1/2"
Ceiling Height: 8' 7 3/4"



THIS FLOORPLAN IS PROVIDED WITHOUT WARRANTY OF ANY KIND. SENSOPIA DISCLAIMS ANY WARRANTY INCLUDING, WITHOUT LIMITATION, SATISFACTORY QUALITY OR ACCURACY OF DIMENSIONS.

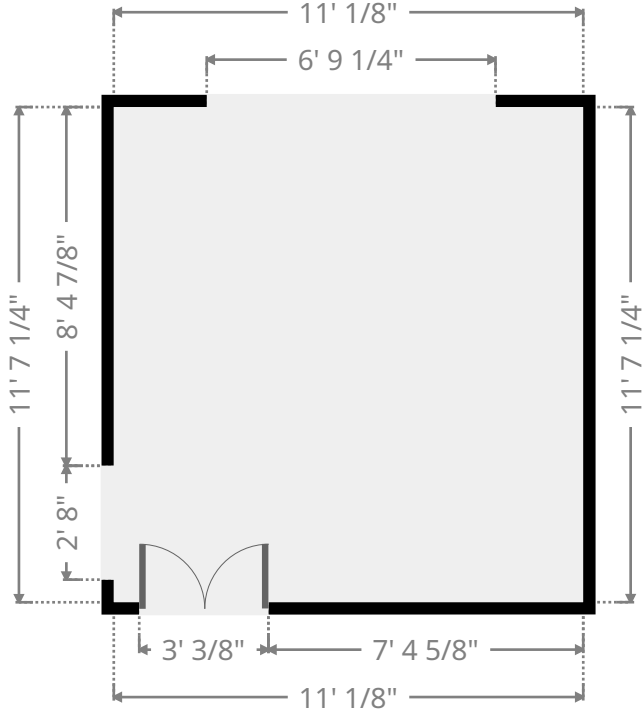
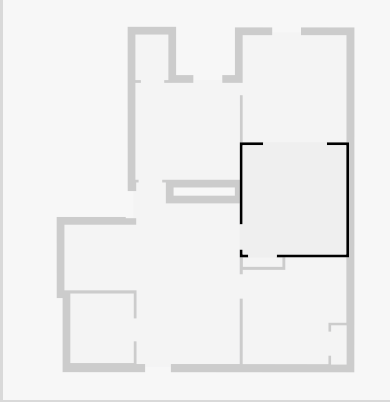


Gresley #14

669 Chestnut Street, Manchester, NH, USA 03104

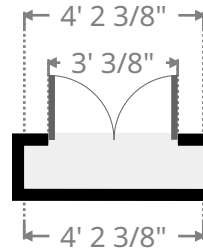
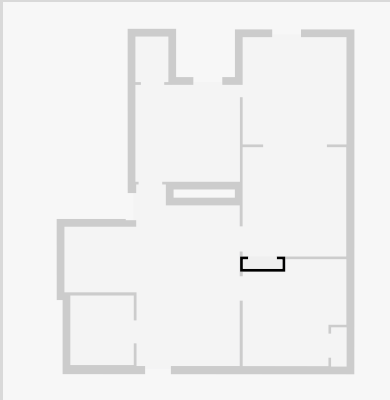
Dining Room

Width: 11' 1/8"
 Length: 11' 7 3/8"
 Area: 127.82 sq ft
 Perimeter: 45' 2 7/8"
 Ceiling Height: 8' 7 3/4"



Closet

Width: 1'
 Length: 4' 2 3/8"
 Area: 4.20 sq ft
 Perimeter: 10' 4 3/4"
 Ceiling Height: 8' 7 3/4"



THIS FLOORPLAN IS PROVIDED WITHOUT WARRANTY OF ANY KIND. SENSOPIA DISCLAIMS ANY WARRANTY INCLUDING, WITHOUT LIMITATION, SATISFACTORY QUALITY OR ACCURACY OF DIMENSIONS.

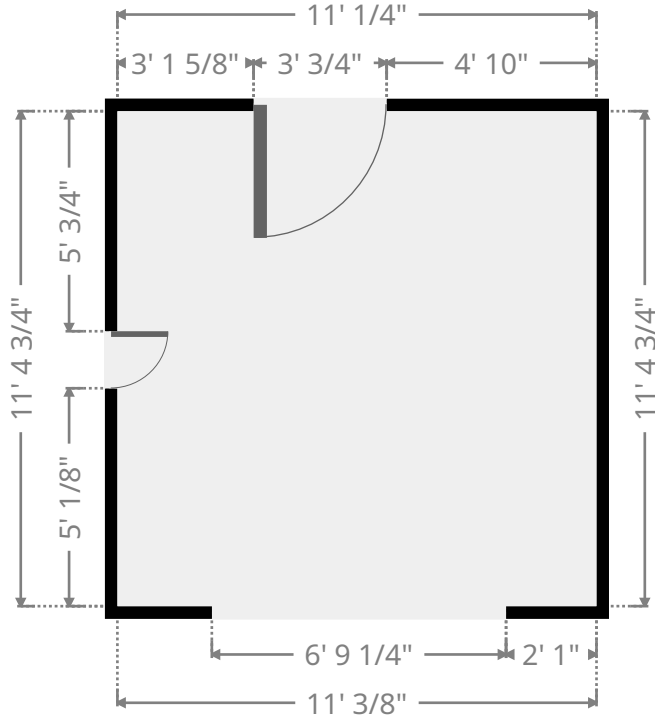
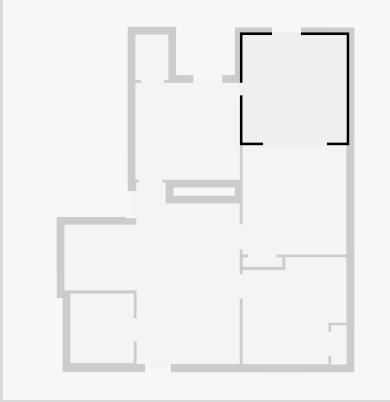


Gresley #14

669 Chestnut Street, Manchester, NH, USA 03104

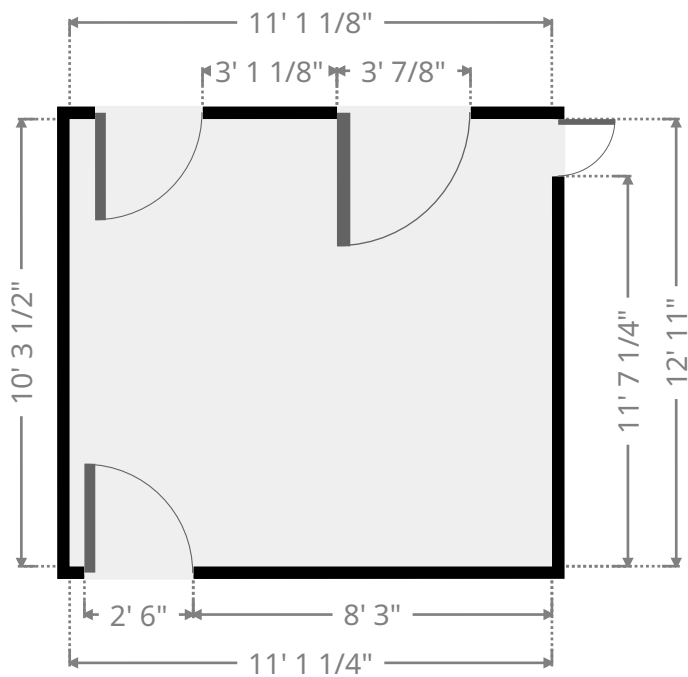
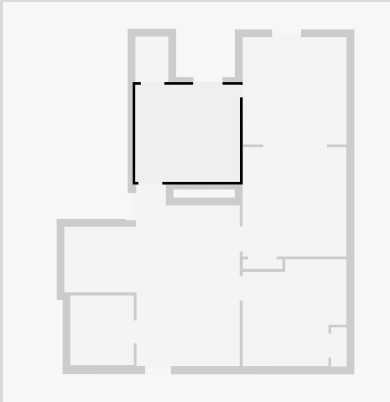
Living Room

Width: 11' 3/8"
 Length: 11' 4 3/4"
 Area: 125.60 sq ft
 Perimeter: 44' 10"
 Ceiling Height: 8' 7 3/4"



Bedroom

Width: 10' 3 1/2"
 Length: 11' 1 1/8"
 Area: 114.20 sq ft
 Perimeter: 42' 9 3/8"
 Ceiling Height: 8' 7 3/4"



THIS FLOORPLAN IS PROVIDED WITHOUT WARRANTY OF ANY KIND. SENSOPIA DISCLAIMS ANY WARRANTY INCLUDING, WITHOUT LIMITATION, SATISFACTORY QUALITY OR ACCURACY OF DIMENSIONS.

Gresley #14

669 Chestnut Street, Manchester, NH, USA 03104

Closet

Width: 3' 6"
Length: 4' 10"
Area: 16.93 sq ft
Perimeter: 16' 8 1/8"
Ceiling Height: 8' 7 3/4"

