

Gresley #13

Statistics

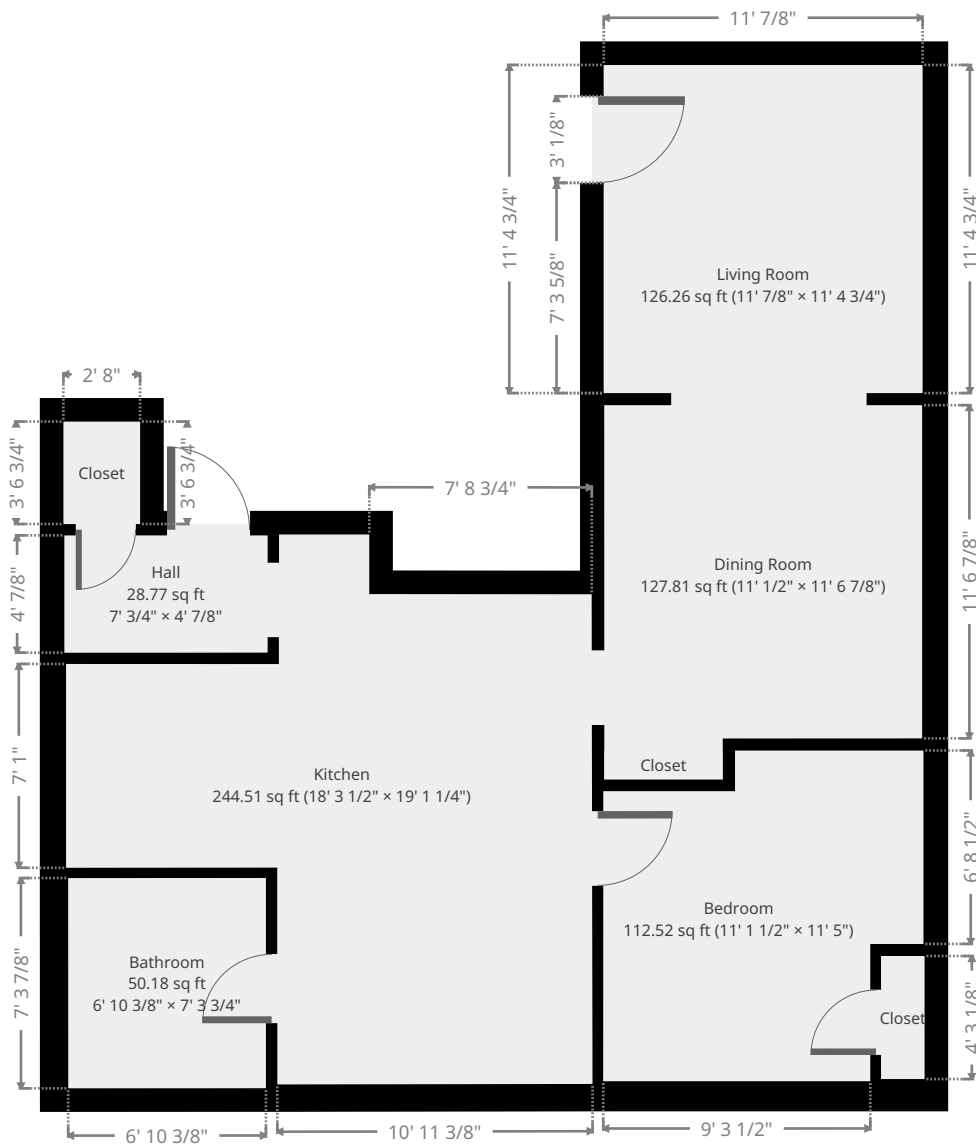
Area: 710 sq ft

1 Floor

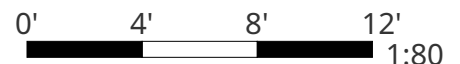
1 Bedroom

1 Bathroom

Ground Floor



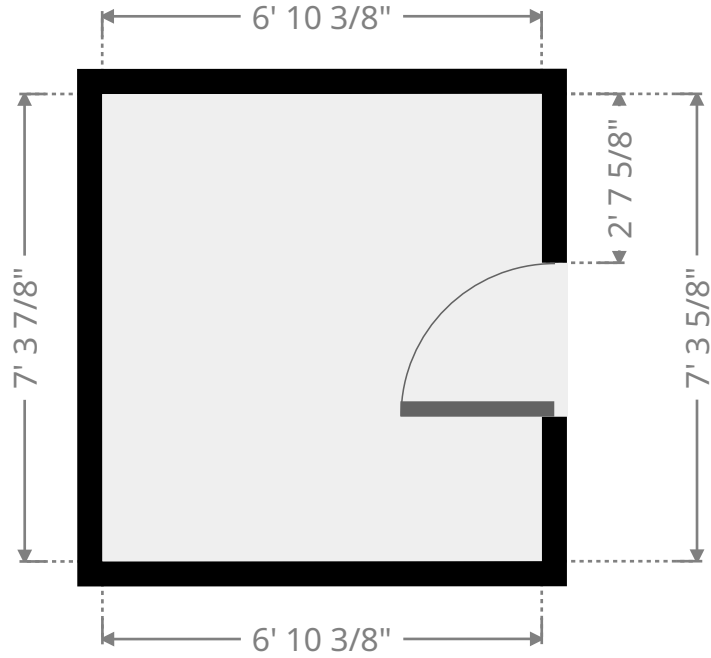
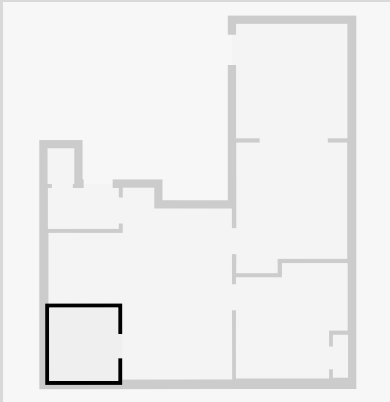
THIS FLOORPLAN IS PROVIDED WITHOUT WARRANTY OF ANY KIND. SENSOPIA DISCLAIMS ANY WARRANTY INCLUDING, WITHOUT LIMITATION, SATISFACTORY QUALITY OR ACCURACY OF DIMENSIONS.



Gresley #13

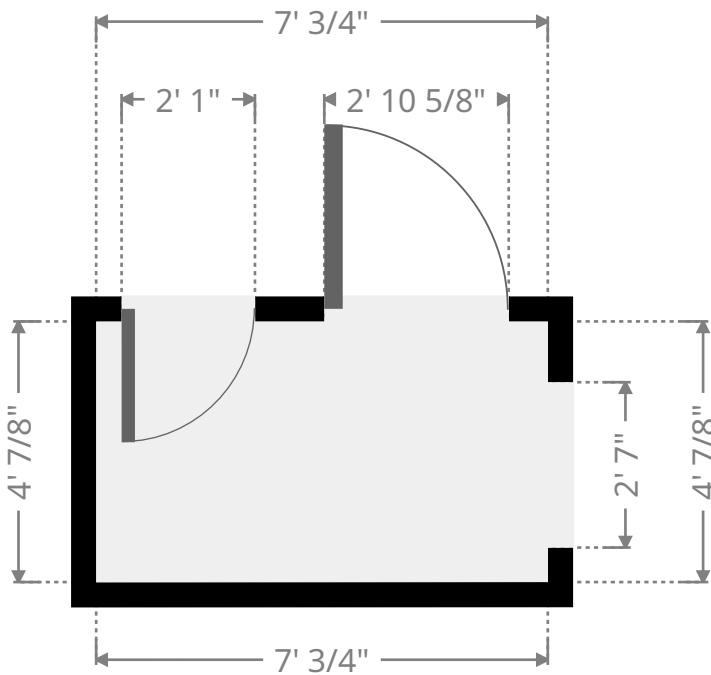
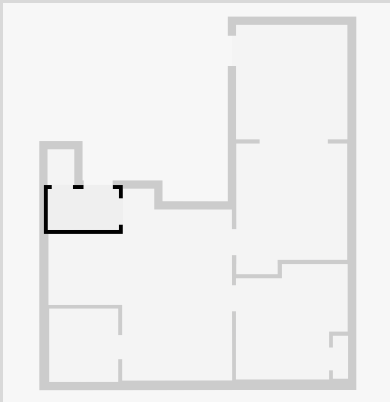
Bathroom

Width: 6' 10 3/8"
 Length: 7' 3 3/4"
 Area: 50.18 sq ft
 Perimeter: 28' 4 1/4"

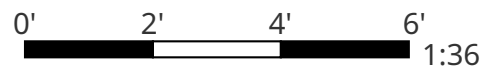


Hall

Width: 4' 7/8"
 Length: 7' 3/4"
 Area: 28.77 sq ft
 Perimeter: 22' 3 1/4"



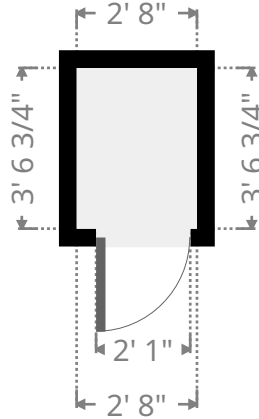
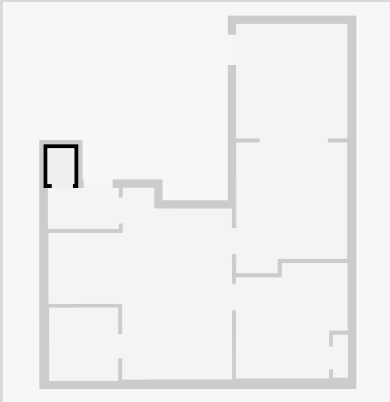
THIS FLOORPLAN IS PROVIDED WITHOUT WARRANTY OF ANY KIND. SENSOPIA DISCLAIMS ANY WARRANTY INCLUDING, WITHOUT LIMITATION, SATISFACTORY QUALITY OR ACCURACY OF DIMENSIONS.



Gresley #13

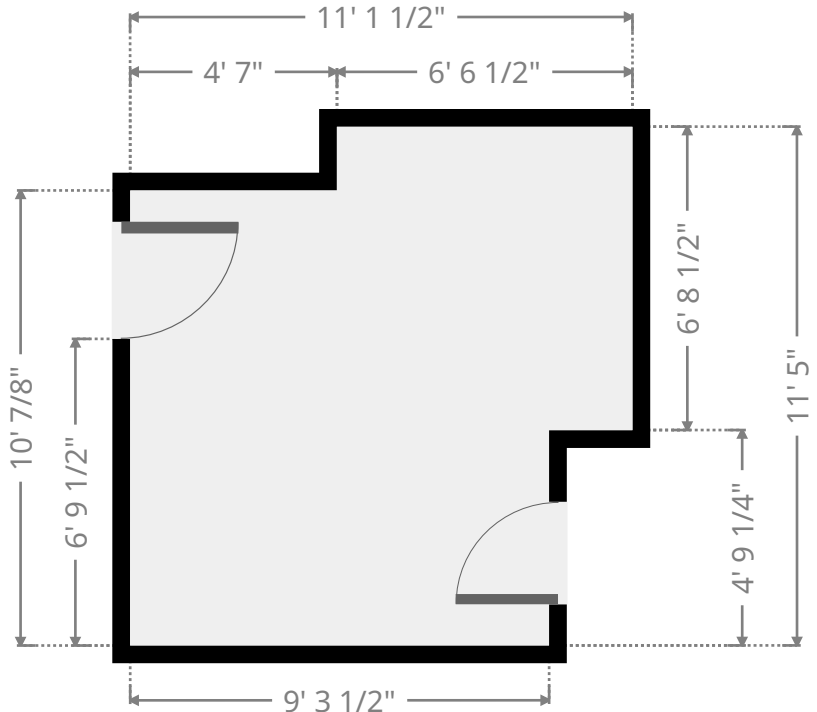
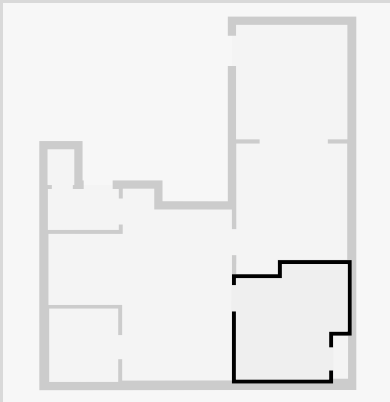
Closet

Width: 2' 8"
 Length: 3' 6 3/4"
 Area: 9.49 sq ft
 Perimeter: 12' 5 3/8"



Bedroom

Width: 11' 1 1/2"
 Length: 11' 5"
 Area: 112.52 sq ft
 Perimeter: 45' 2 3/4"

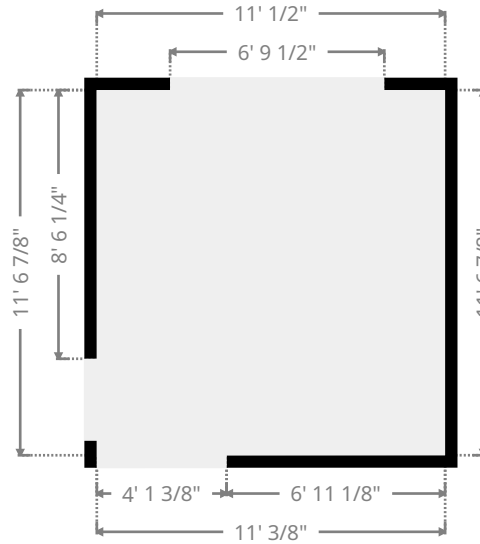
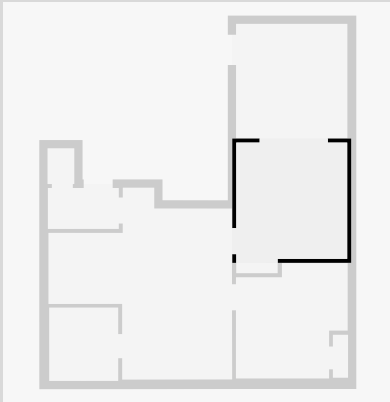


THIS FLOORPLAN IS PROVIDED WITHOUT WARRANTY OF ANY KIND. SENSOPIA DISCLAIMS ANY WARRANTY INCLUDING, WITHOUT LIMITATION, SATISFACTORY QUALITY OR ACCURACY OF DIMENSIONS.

Gresley #13

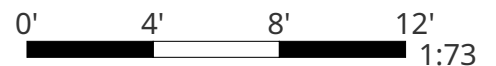
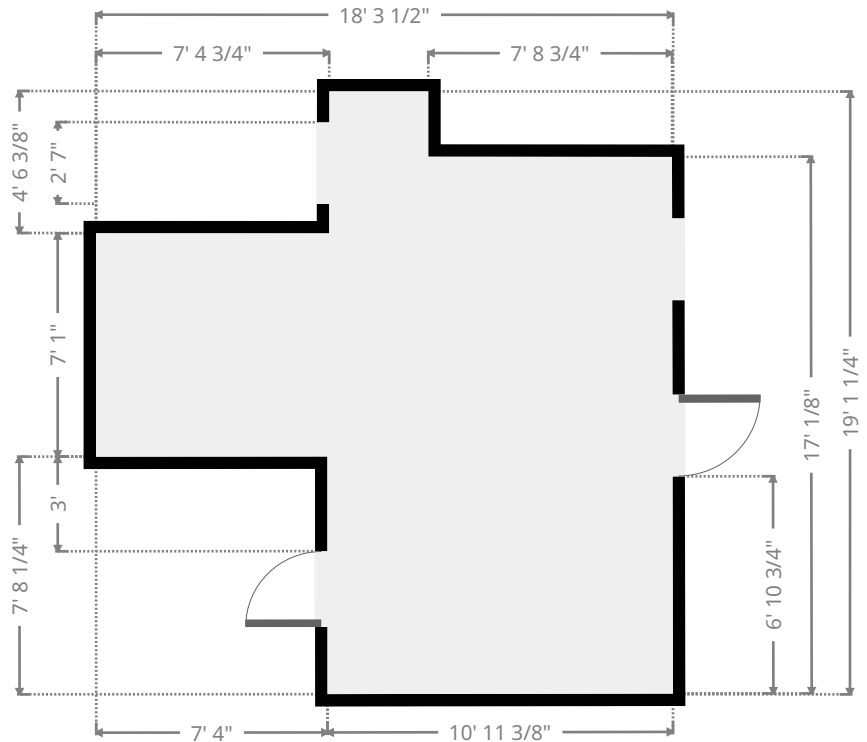
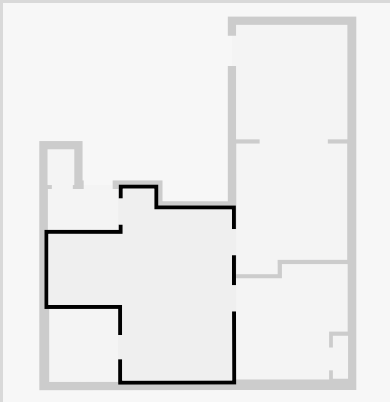
Dining Room

Width: 11' 1/2"
 Length: 11' 6 7/8"
 Area: 127.81 sq ft
 Perimeter: 45' 2 3/4"



Kitchen

Width: 18' 3 1/2"
 Length: 19' 1 1/4"
 Area: 244.51 sq ft
 Perimeter: 74' 8 7/8"

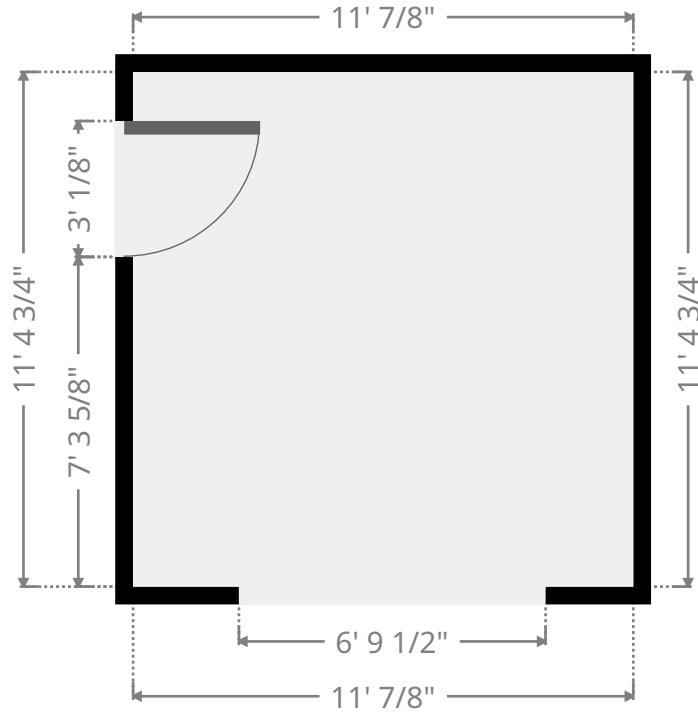
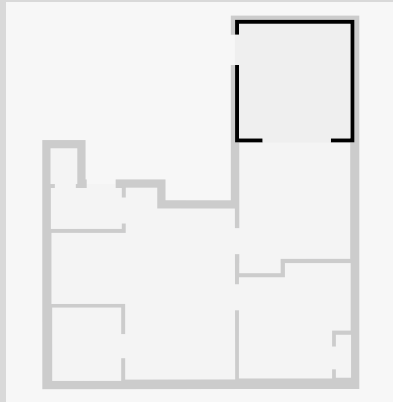


THIS FLOORPLAN IS PROVIDED WITHOUT WARRANTY OF ANY KIND. SENSOPIA DISCLAIMS ANY WARRANTY INCLUDING, WITHOUT LIMITATION, SATISFACTORY QUALITY OR ACCURACY OF DIMENSIONS.

Gresley #13

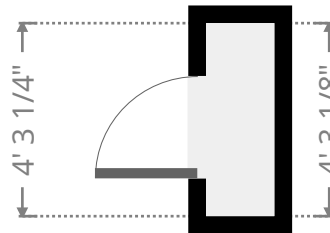
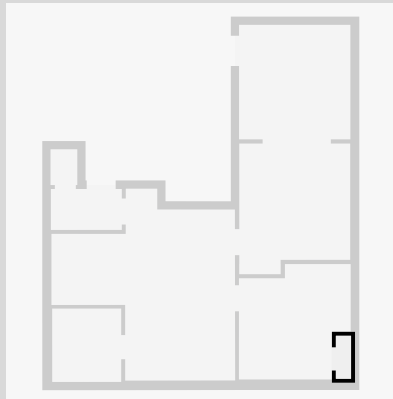
Living Room

Width: 11' 7/8"
Length: 11' 4 3/4"
Area: 126.26 sq ft
Perimeter: 44' 11 3/8"



Closet

Width: 1' 6 1/8"
Length: 4' 3 1/4"
Area: 6.46 sq ft
Perimeter: 11' 6 7/8"



Gresley #13

Closet

Width: 1' 1/8"
Length: 4' 1 1/2"
Area: 4.15 sq ft
Perimeter: 10' 3 1/8"

