

# Gresley 11B, 10B, 12B

## Statistics

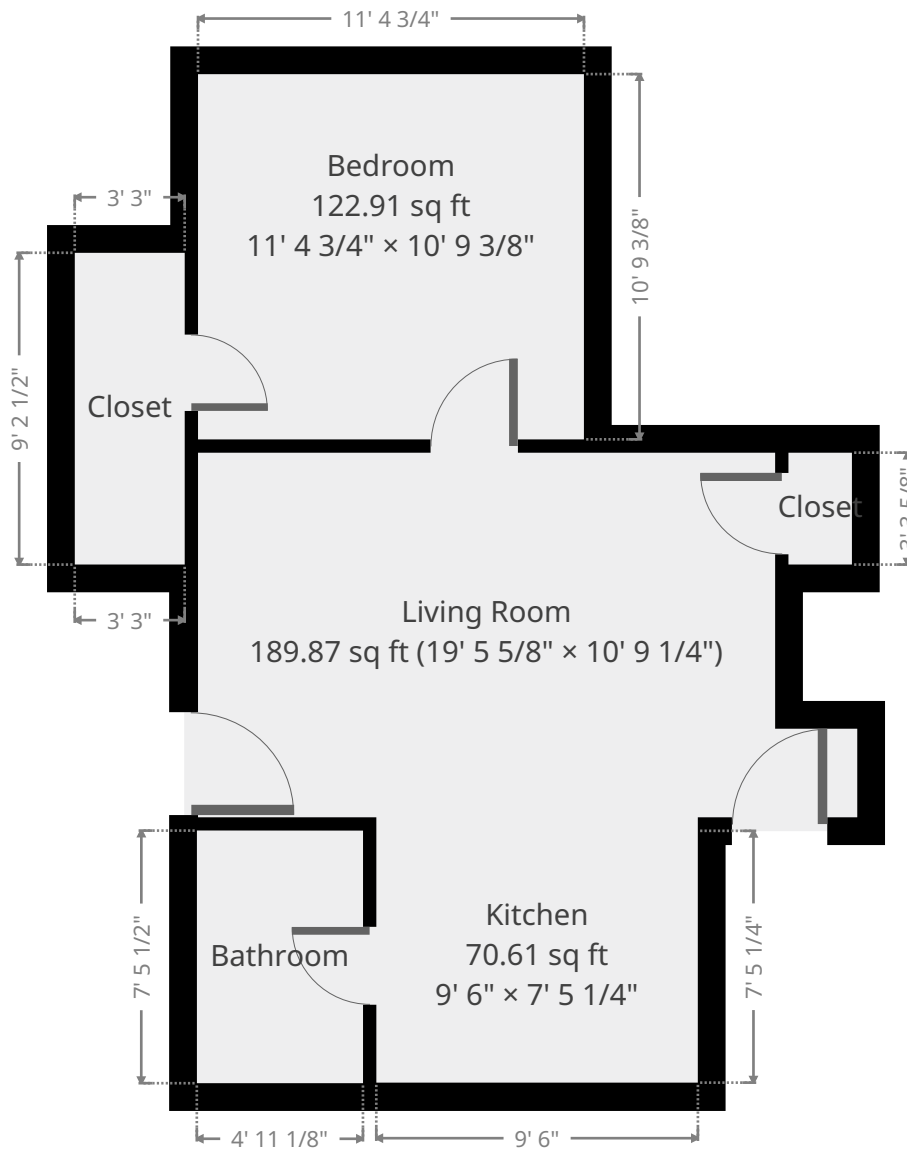
Area: 456 sq ft

1 Floor

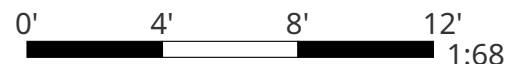
1 Bedroom

1 Bathroom

## Ground Floor



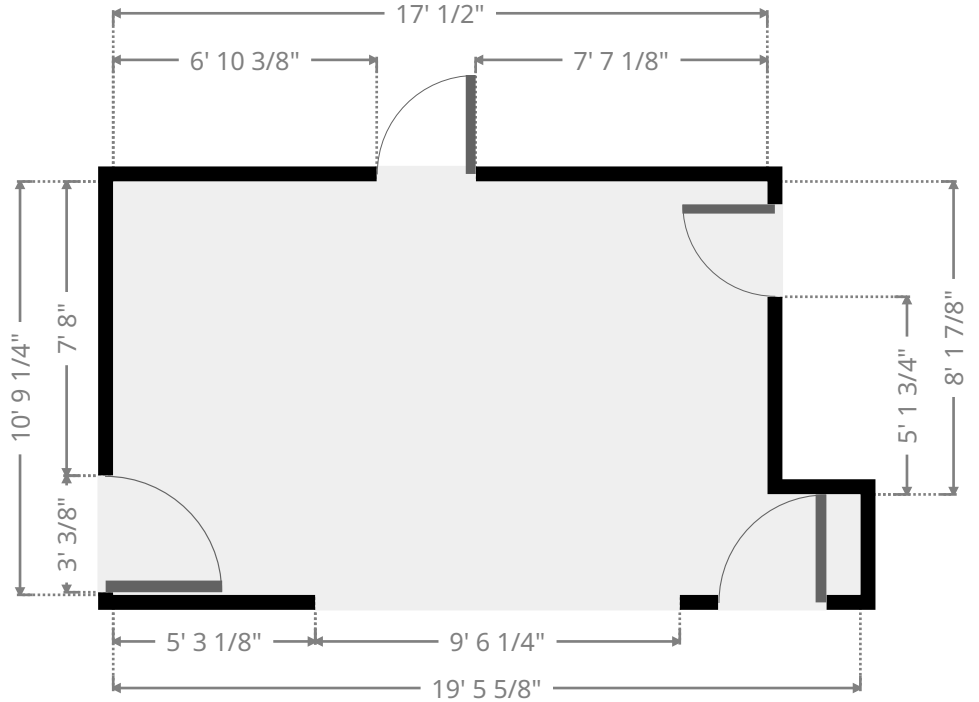
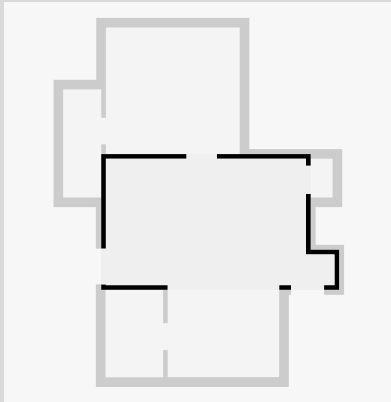
THIS FLOORPLAN IS PROVIDED WITHOUT WARRANTY OF ANY KIND. SENSOPIA DISCLAIMS ANY WARRANTY INCLUDING, WITHOUT LIMITATION, SATISFACTORY QUALITY OR ACCURACY OF DIMENSIONS.



# Gresley 11B, 10B, 12B

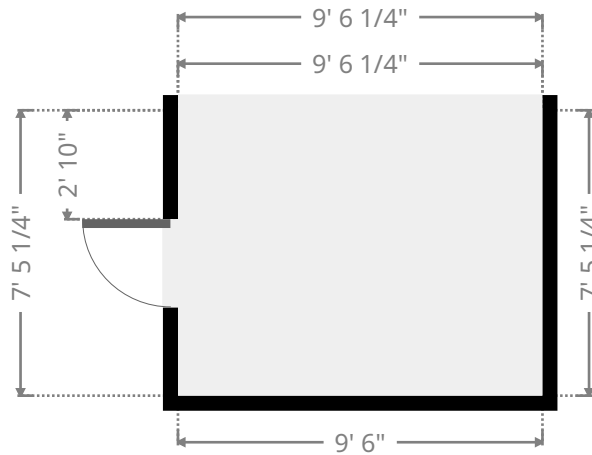
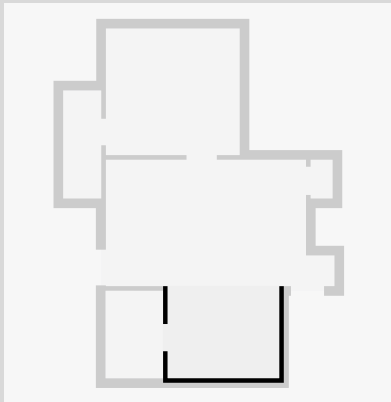
## Living Room

Width: 10' 9 1/4"  
 Length: 19' 5 5/8"  
 Area: 189.87 sq ft  
 Perimeter: 60' 5 5/8"

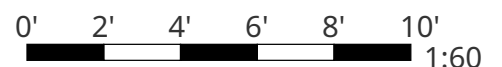


## Kitchen

Width: 7' 5 1/4"  
 Length: 9' 6"  
 Area: 70.61 sq ft  
 Perimeter: 33' 10 3/8"



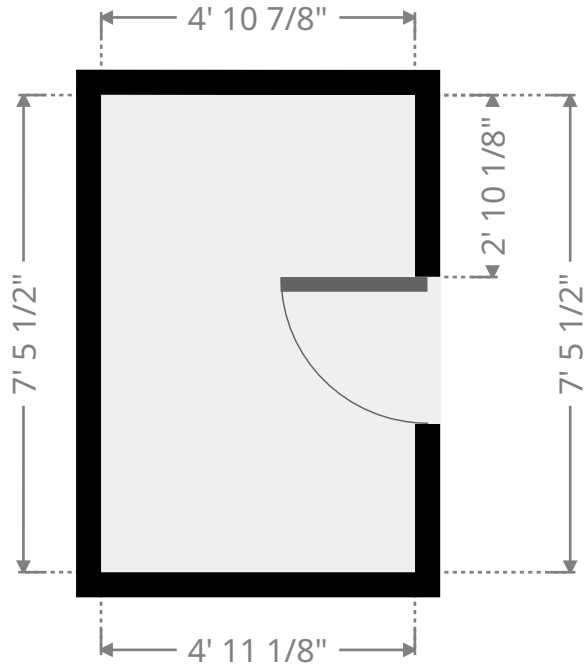
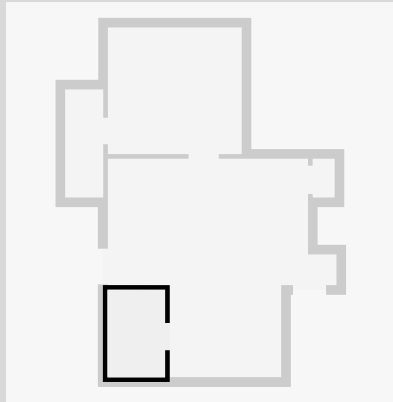
THIS FLOORPLAN IS PROVIDED WITHOUT WARRANTY OF ANY KIND. SENSOPIA DISCLAIMS ANY WARRANTY INCLUDING, WITHOUT LIMITATION, SATISFACTORY QUALITY OR ACCURACY OF DIMENSIONS.



# Gresley 11B, 10B, 12B

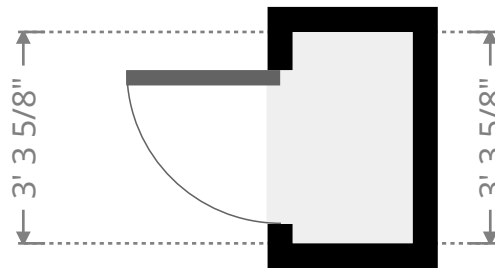
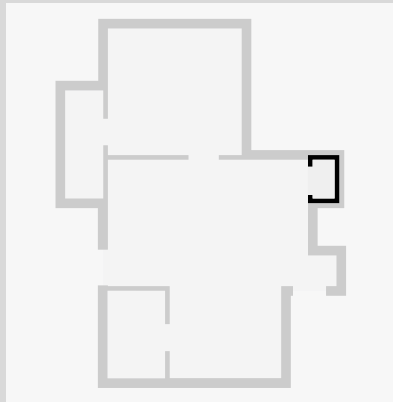
## Bathroom

Width: 4' 10 7/8"  
 Length: 7' 5 1/2"  
 Area: 36.58 sq ft  
 Perimeter: 24' 8 3/4"



## Closet

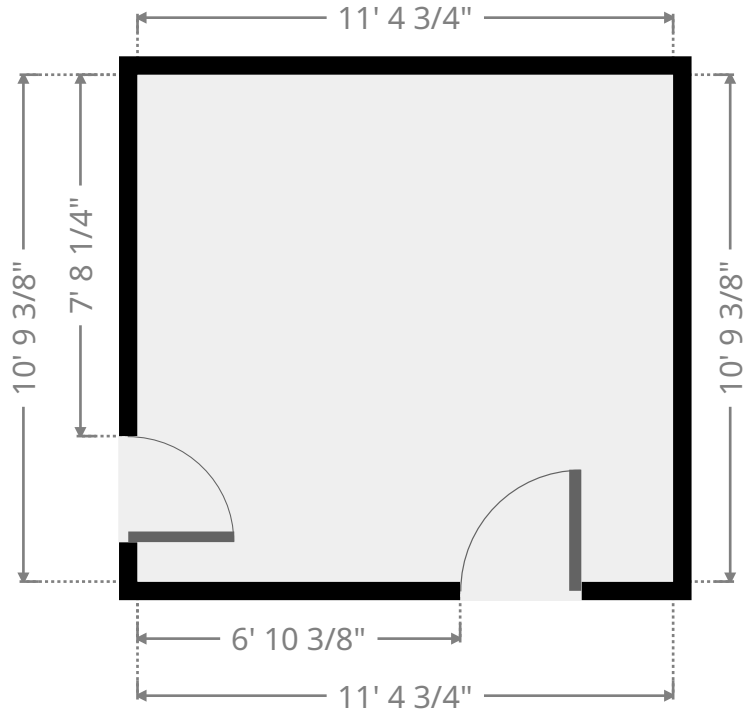
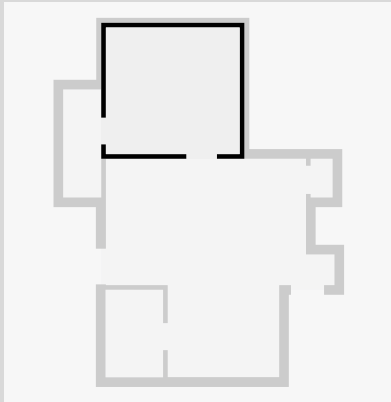
Width: 1' 10 1/2"  
 Length: 3' 3 5/8"  
 Area: 6.19 sq ft  
 Perimeter: 10' 4 1/4"



# Gresley 11B, 10B, 12B

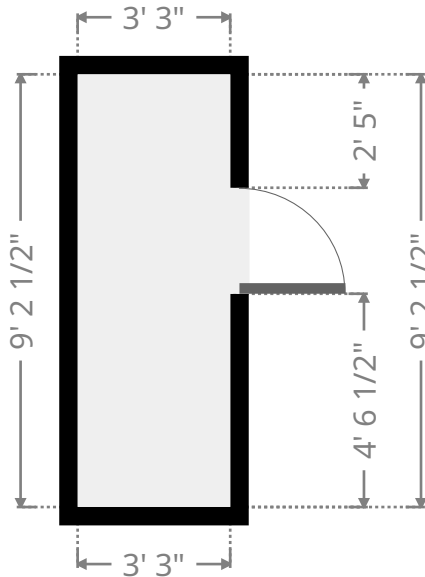
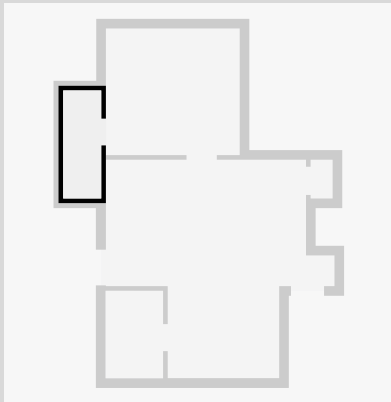
## Bedroom

Width: 10' 9 3/8"  
 Length: 11' 4 3/4"  
 Area: 122.91 sq ft  
 Perimeter: 44' 4 3/8"



## Closet

Width: 3' 3"  
 Length: 9' 2 1/2"  
 Area: 29.89 sq ft  
 Perimeter: 24' 10 7/8"



THIS FLOORPLAN IS PROVIDED WITHOUT WARRANTY OF ANY KIND. SENSOPIA DISCLAIMS ANY WARRANTY INCLUDING, WITHOUT LIMITATION, SATISFACTORY QUALITY OR ACCURACY OF DIMENSIONS.

