

Gresley #1,2

Statistics

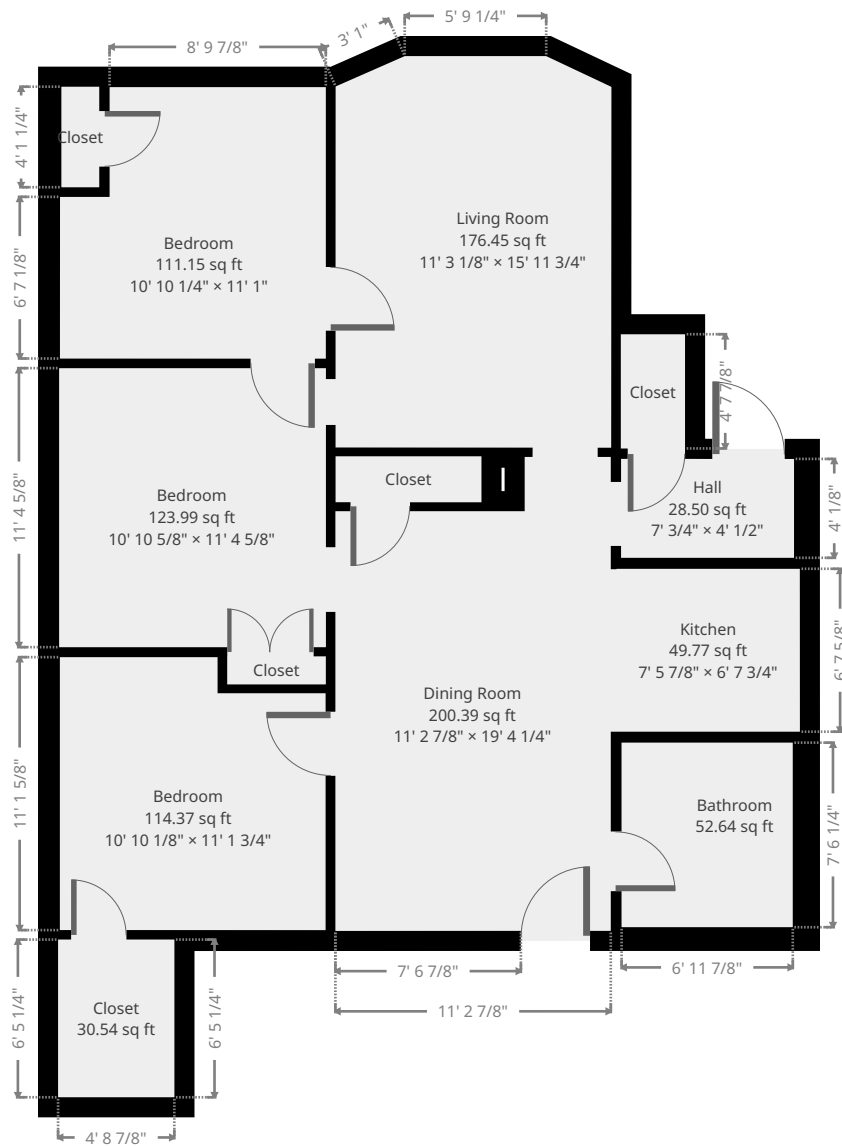
Area: 921 sq ft

1 Floor

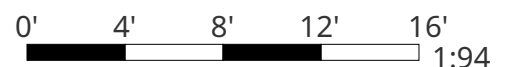
3 Bedrooms

1 Bathroom

Ground Floor



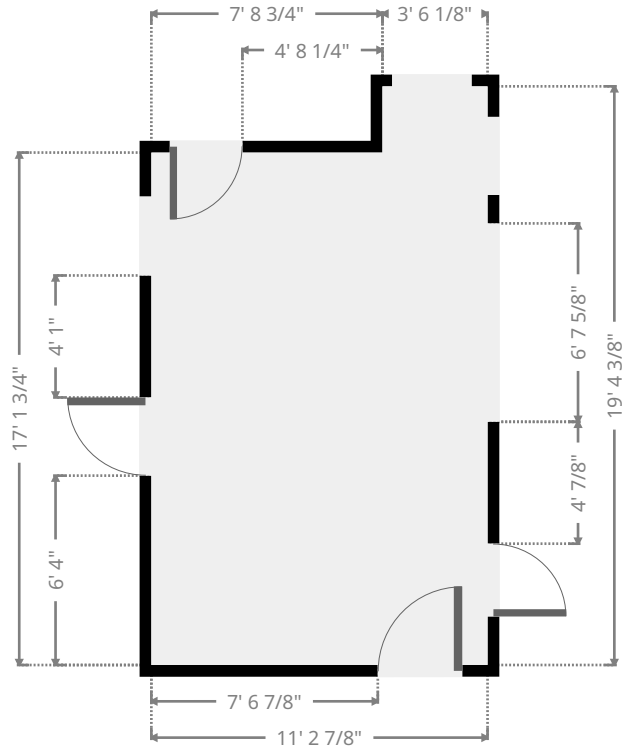
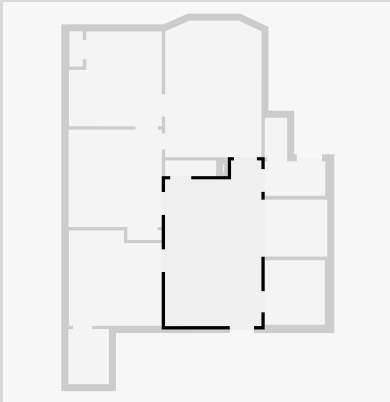
THIS FLOORPLAN IS PROVIDED WITHOUT WARRANTY OF ANY KIND. SENSOPIA DISCLAIMS ANY WARRANTY INCLUDING, WITHOUT LIMITATION, SATISFACTORY QUALITY OR ACCURACY OF DIMENSIONS.



Gresley #1,2

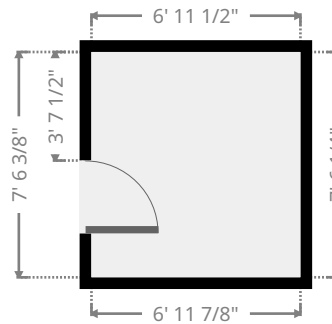
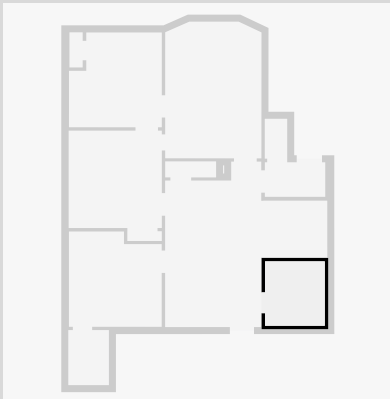
Dining Room

Width: 11' 2 7/8"
Length: 19' 4 1/4"
Area: 200.39 sq ft
Perimeter: 61' 2 1/8"

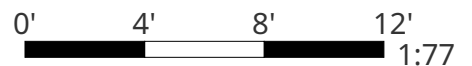


Bathroom

Width: 6' 11 7/8"
Length: 7' 6 3/8"
Area: 52.64 sq ft
Perimeter: 29' 1/2"



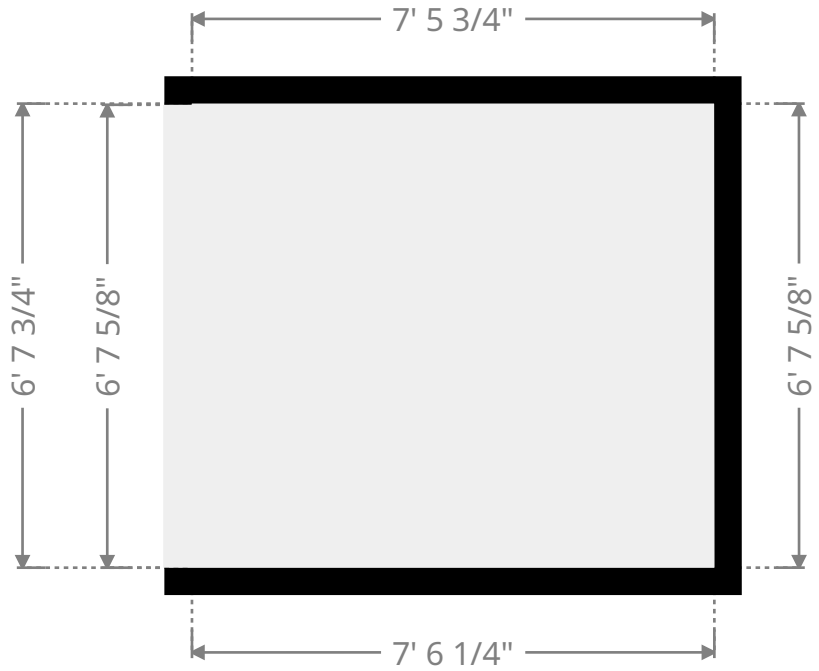
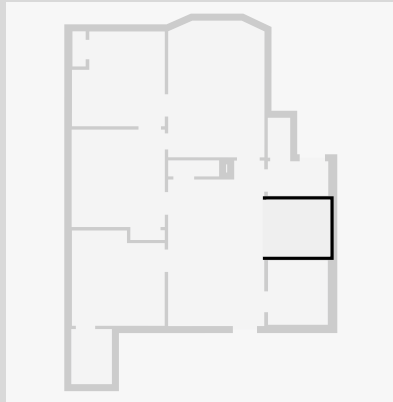
THIS FLOORPLAN IS PROVIDED WITHOUT WARRANTY OF ANY KIND. SENSOPIA DISCLAIMS ANY WARRANTY INCLUDING, WITHOUT LIMITATION, SATISFACTORY QUALITY OR ACCURACY OF DIMENSIONS.



Gresley #1,2

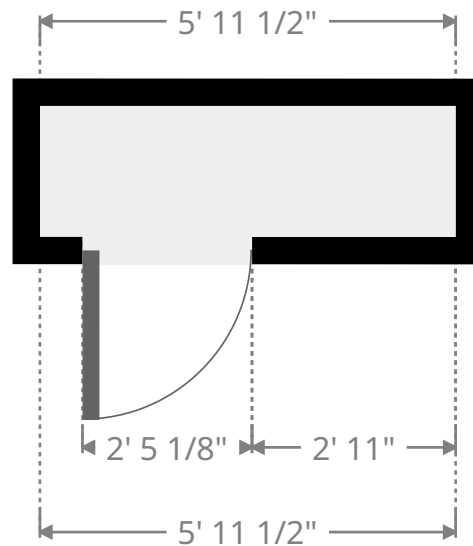
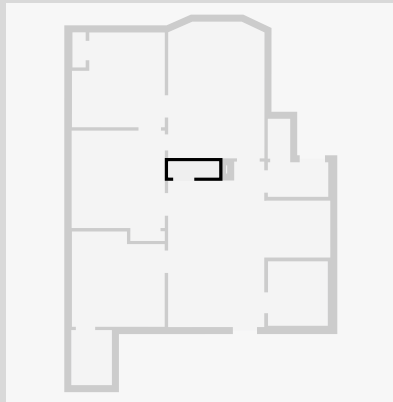
Kitchen

Width: 6' 7 3/4"
 Length: 7' 5 7/8"
 Area: 49.77 sq ft
 Perimeter: 28' 3 1/4"



Closet

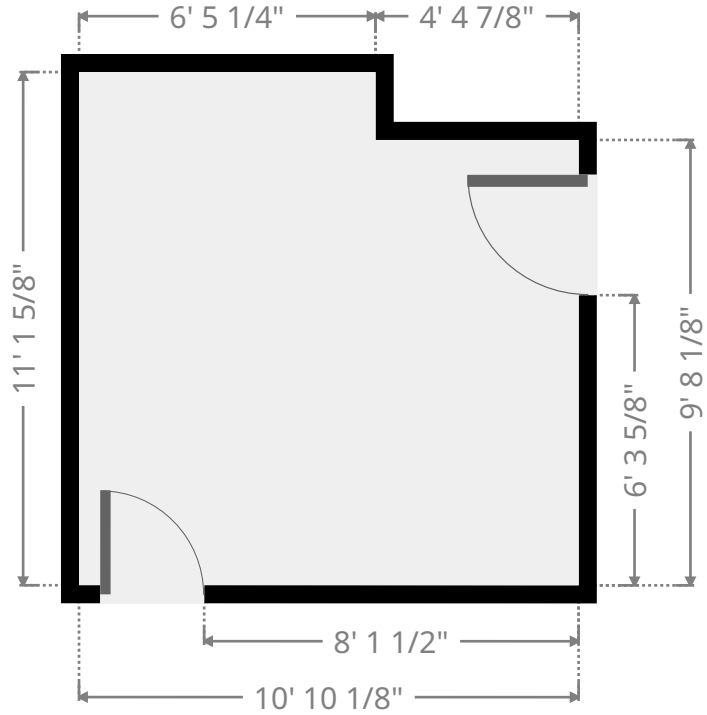
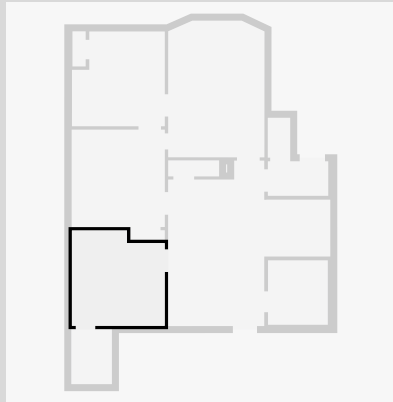
Width: 1' 10 1/2"
 Length: 5' 11 1/2"
 Area: 11.16 sq ft
 Perimeter: 15' 8"



Gresley #1,2

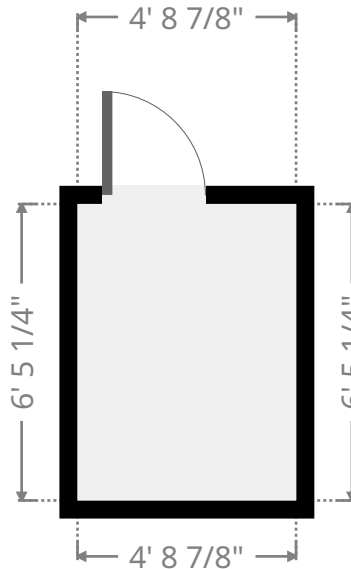
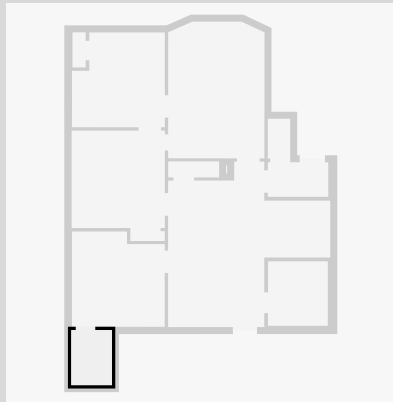
Bedroom

Width: 10' 10 1/8"
 Length: 11' 1 3/4"
 Area: 114.37 sq ft
 Perimeter: 43' 11 3/4"



Closet

Width: 4' 8 7/8"
 Length: 6' 5 1/4"
 Area: 30.54 sq ft
 Perimeter: 22' 4 3/8"

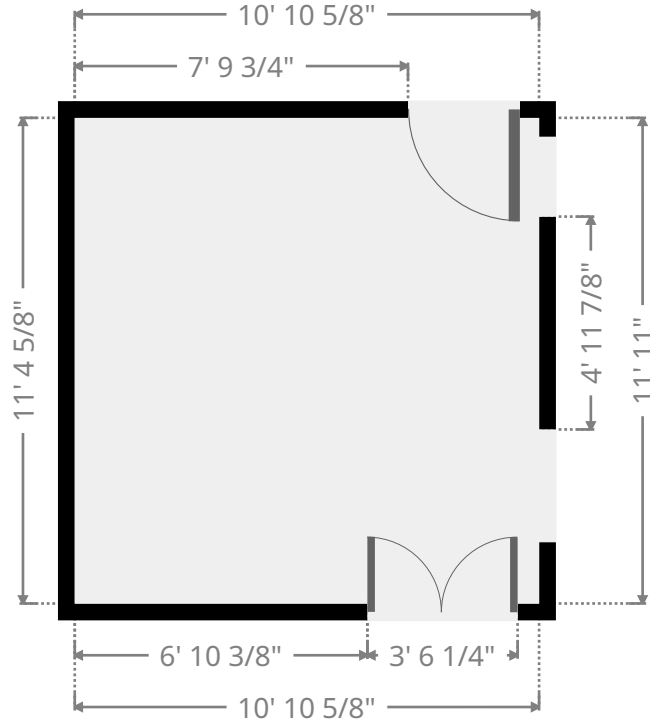
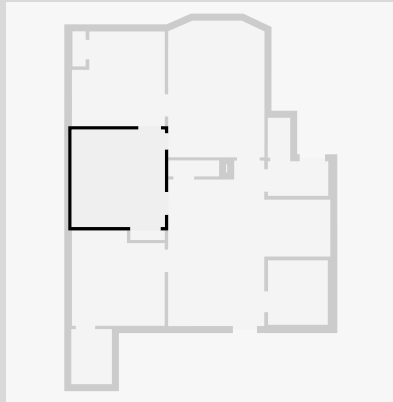


THIS FLOORPLAN IS PROVIDED WITHOUT WARRANTY OF ANY KIND. SENSOPIA DISCLAIMS ANY WARRANTY INCLUDING, WITHOUT LIMITATION, SATISFACTORY QUALITY OR ACCURACY OF DIMENSIONS.

Gresley #1,2

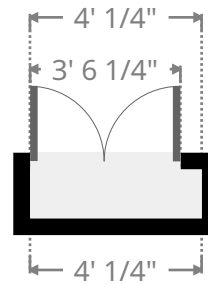
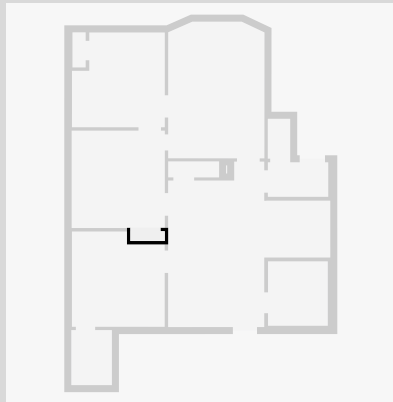
Bedroom

Width: 10' 10 5/8"
 Length: 11' 4 5/8"
 Area: 123.99 sq ft
 Perimeter: 44' 6 5/8"



Closet

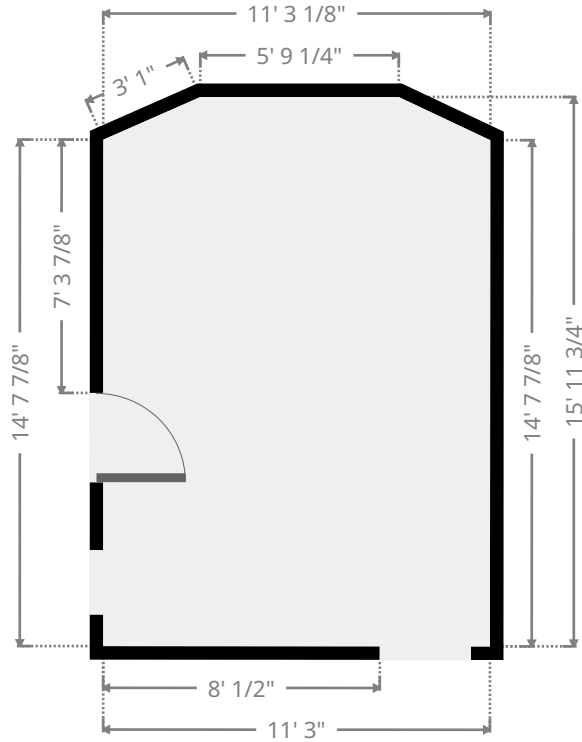
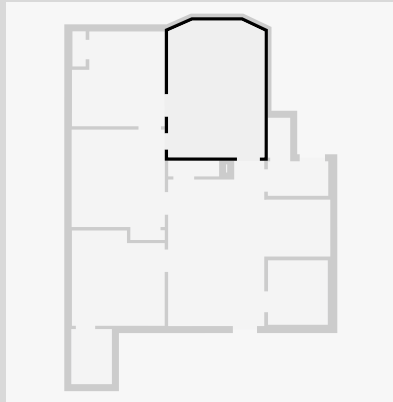
Width: 1' 1 3/4"
 Length: 4' 1/4"
 Area: 4.60 sq ft
 Perimeter: 10' 4"



Gresley #1,2

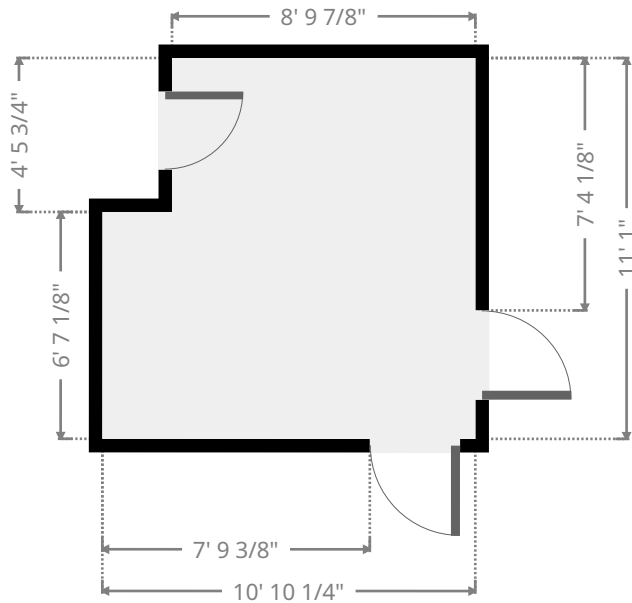
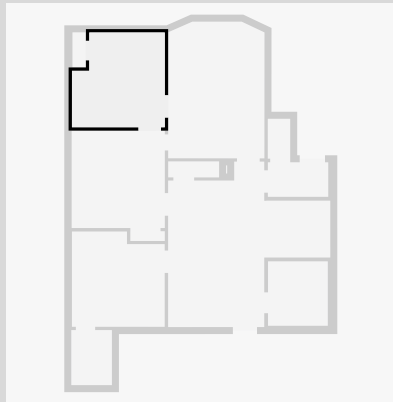
Living Room

Width: 11' 3 1/8"
 Length: 15' 11 3/4"
 Area: 176.45 sq ft
 Perimeter: 52' 6 1/4"

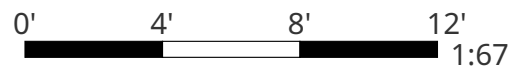


Bedroom

Width: 10' 10 1/4"
 Length: 11' 1"
 Area: 111.15 sq ft
 Perimeter: 43' 10 3/8"



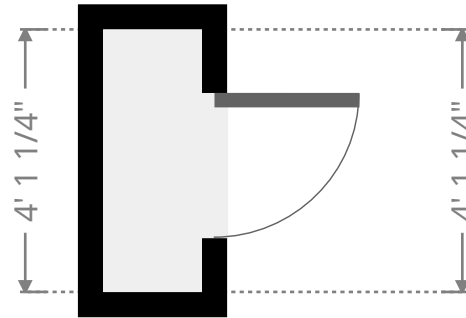
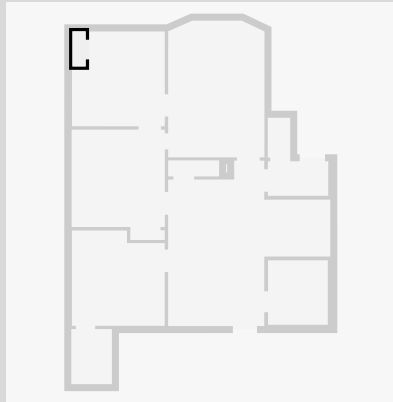
THIS FLOORPLAN IS PROVIDED WITHOUT WARRANTY OF ANY KIND. SENSOPIA DISCLAIMS ANY WARRANTY INCLUDING, WITHOUT LIMITATION, SATISFACTORY QUALITY OR ACCURACY OF DIMENSIONS.



Gresley #1,2

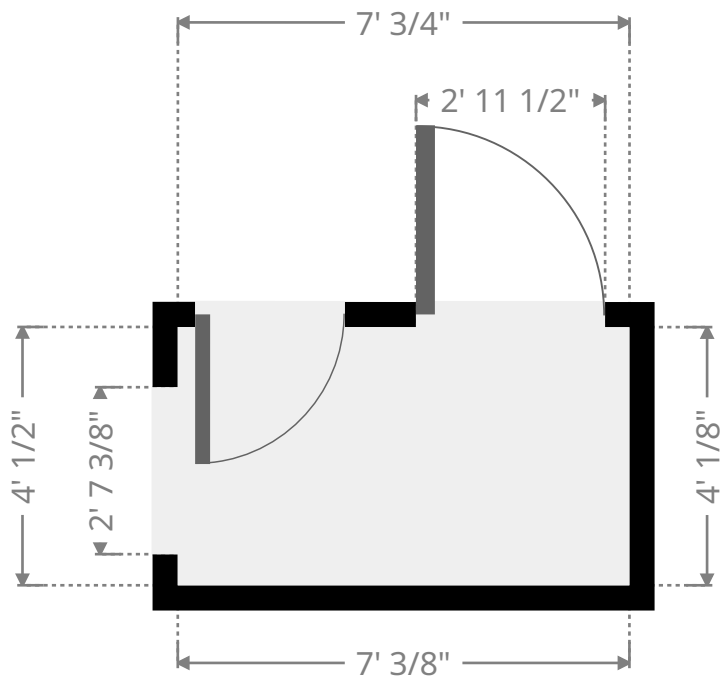
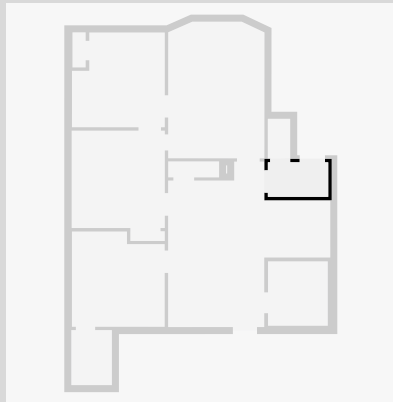
Closet

Width: 1' 6 5/8"
Length: 4' 1 1/4"
Area: 6.35 sq ft
Perimeter: 11' 3 5/8"

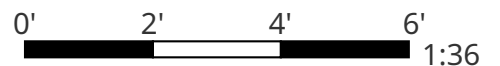


Hall

Width: 4' 1/2"
Length: 7' 3/4"
Area: 28.50 sq ft
Perimeter: 22' 2 3/8"



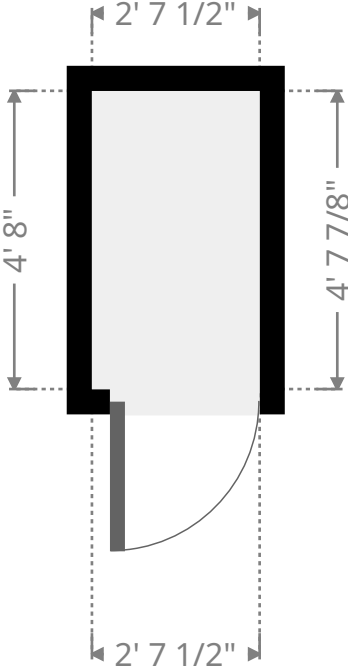
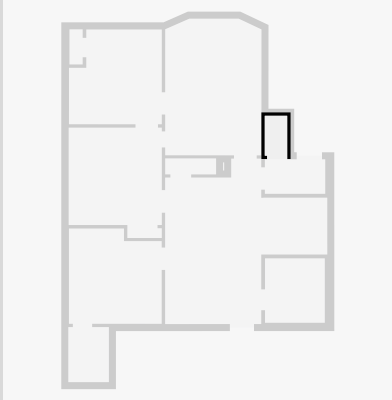
THIS FLOORPLAN IS PROVIDED WITHOUT WARRANTY OF ANY KIND. SENSOPIA DISCLAIMS ANY WARRANTY INCLUDING, WITHOUT LIMITATION, SATISFACTORY QUALITY OR ACCURACY OF DIMENSIONS.



Gresley #1,2

Closet

Width: 2' 7 1/2"
Length: 4' 8"
Area: 12.22 sq ft
Perimeter: 14' 6 3/4"



THIS FLOORPLAN IS PROVIDED WITHOUT WARRANTY OF ANY KIND. SENSOPIA DISCLAIMS ANY WARRANTY INCLUDING, WITHOUT LIMITATION, SATISFACTORY QUALITY OR ACCURACY OF DIMENSIONS.

